



**PUBLIC WORKS**  
Engineering

**DATE:** November 13, 2025

**TO:** PAUL ZACHARY,  
PUBLIC WORKS DEPUTY  
DIRECTOR

**FROM:** <sup>HAS</sup> H. SOMDECERFF,  
PUBLIC WORKS DESIGN  
MANAGER

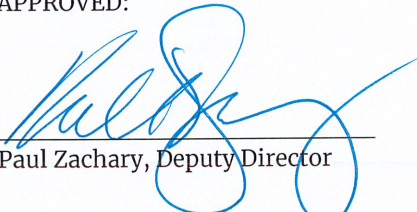
The Specification Review Committee recommends and asks the Public Works Deputy Director to approve the following:

1. Approve Modification to Standard Drawing 768 – Standard Recessed Curb Inlet.  
Summary of change: To add the under drain and setting the dimension for the gutter as 18".

Please call Marqua Jimmerson at (918) 596-7355 If you have any questions.

Thank you,

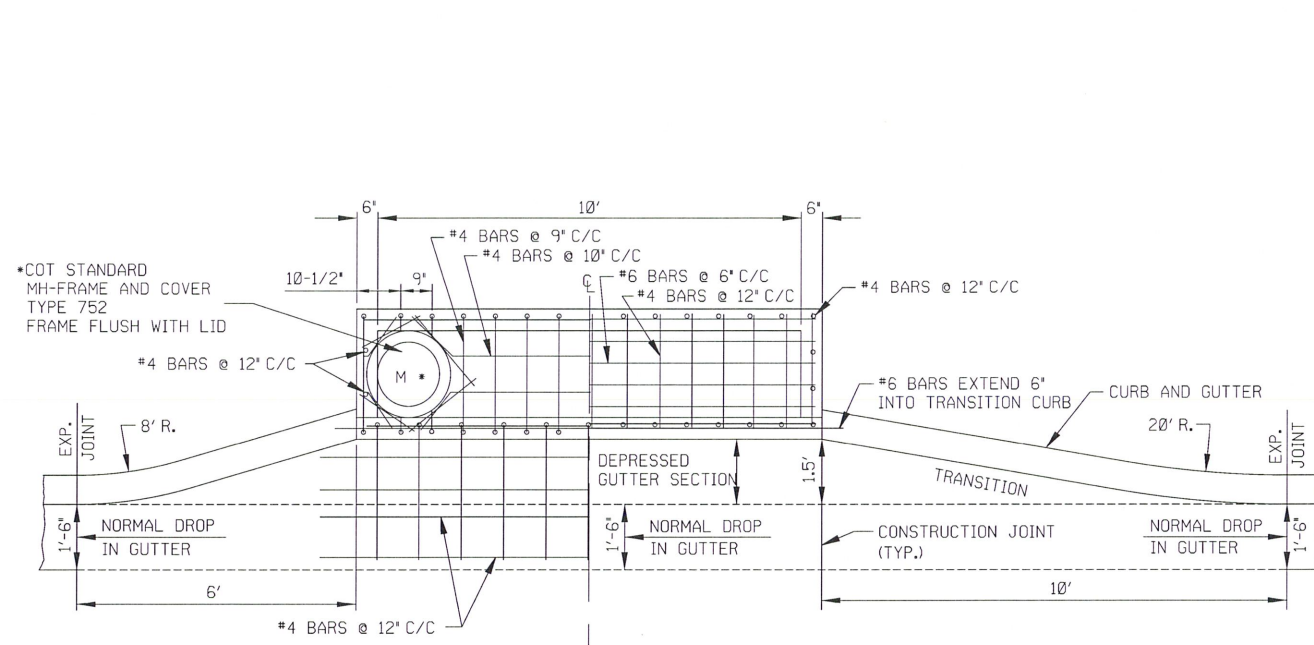
APPROVED:

  
\_\_\_\_\_  
Paul Zachary, Deputy Director

11.19.25  
\_\_\_\_\_  
Date

Cc: Public Works Engineering Services Specification Review Committee

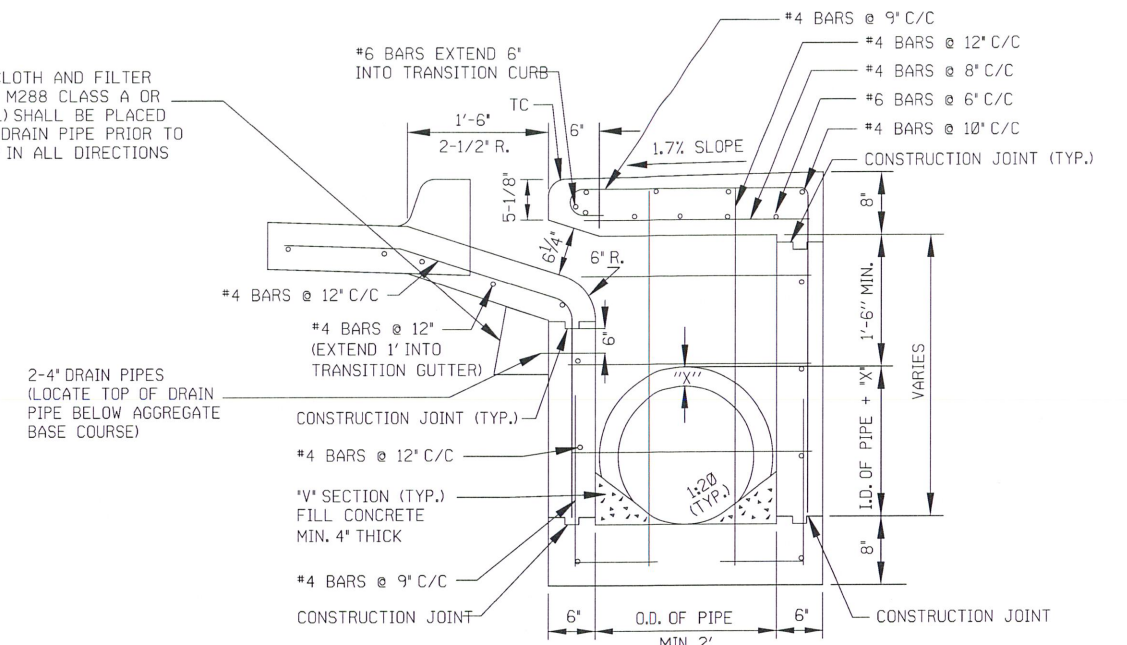
PATH NAME: \\E1\PARTS\STD\DCN.STDS\768-STD-RECESSED-CURB-INLET.DGN DJN 10/29/2025



PLAN - SECTION

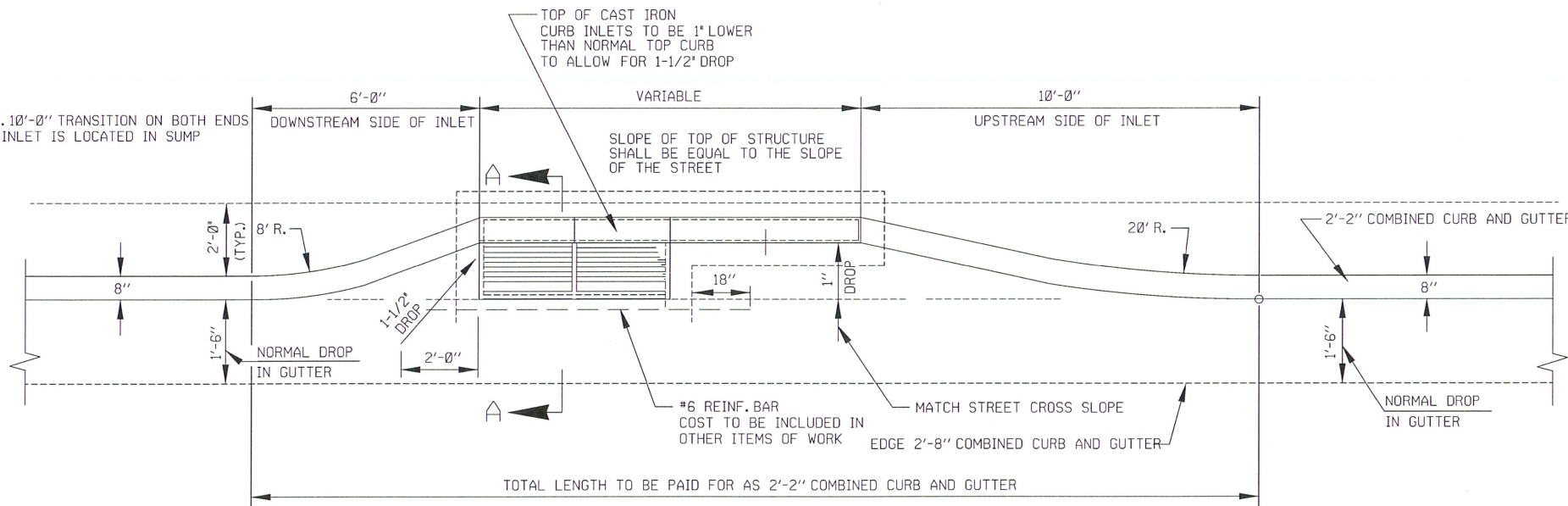
## RECESSED CURB INLET

1/4" HARDWARE CLOTH AND FILTER FABRIC (AASHTO M288 CLASS A OR APPROVED EQUAL) SHALL BE PLACED IN FRONT OF 4" DRAIN PIPE PRIOR TO PLACING #57 15' IN ALL DIRECTIONS



ELEVATION - SECTION A-A

NOTE:  
CONST. 10'-0" TRANSITION ON BOTH ENDS  
WHEN INLET IS LOCATED IN SUMP



## CURB TURNOUT FOR RECESSED CAST IRON CURB INLET

NOTE:

1. THE CONTRACTOR MAY PROPOSE ALTERNATE PROCEDURES UNITS. PLANS FOR SUCH PROPOSED ALTERNATES SHALL BE FOR THE CONSTRUCTION OF INLETS, INCLUDING PRECAST SUBMITTED TO THE ENGINEER FOR REVIEW AND APPROVAL BEFORE CONSTRUCTION.
2. REINFORCING STEEL SHALL CONFORM TO STANDARD SPECIFICATIONS FOR 'REINFORCING STEEL.'
3. INLET WILL BE PAID FOR AS 'EACH.'

NOT TO SCALE

REVISION	BY	DATE

*TGP*  
CITY ENGINEER  
*tgp*  
DESIGN MANAGER

CITY OF TULSA, OKLAHOMA

STANDARD RECESSED CURB INLET

DATE: OCT. 2025

STD. 768