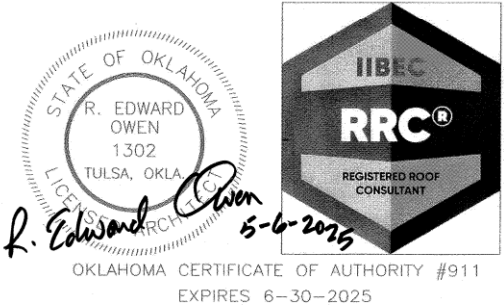


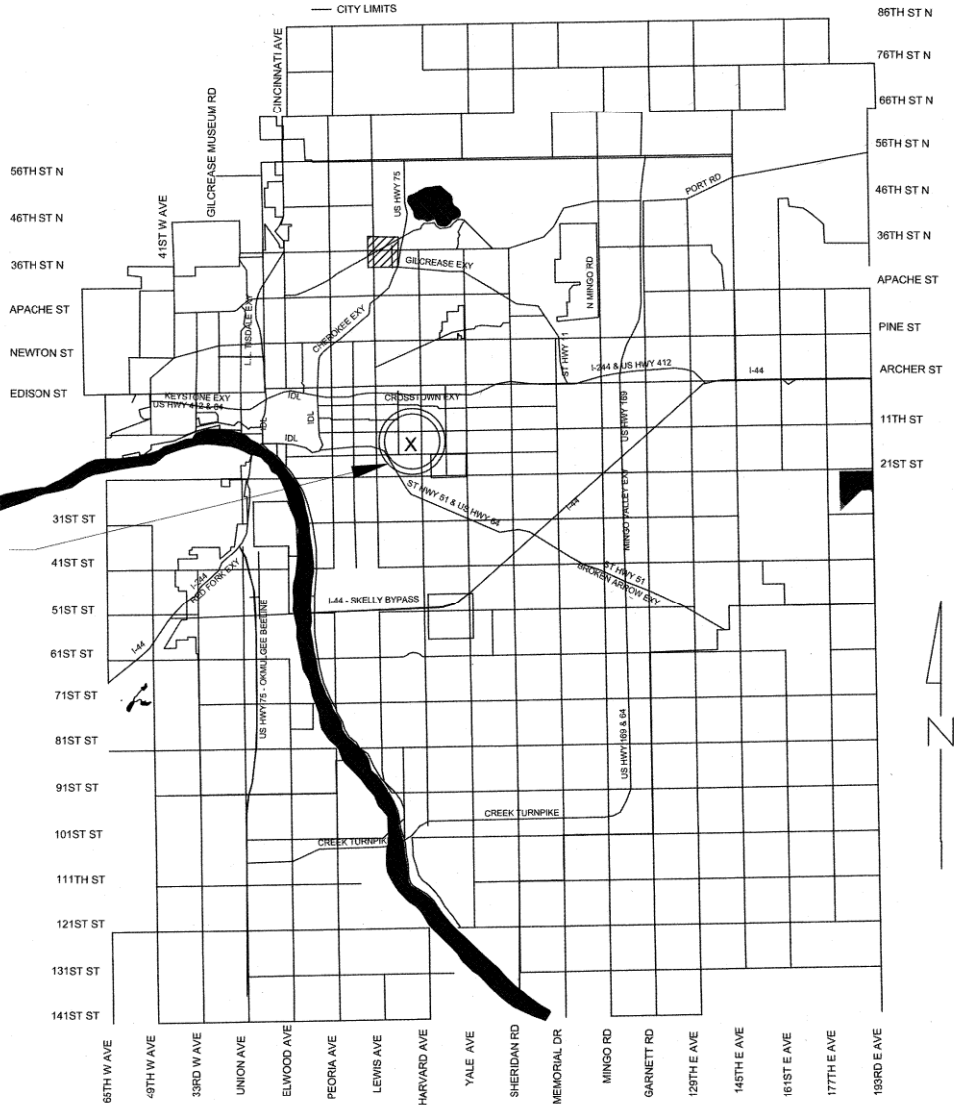
DRAWING INDEX

SHEET NO.	TITLE
PI	COVER SHEET
A-1	PAY ITEMS
A-2	ROOF DEMOLITION PLAN
A-3	TAPERED INSULATION LAYOUT PLAN
R-1	NEW ROOF PLAN
R-2	TPO DETAILS
R-3	TPO DETAILS
R-4	TPO DETAILS
R-5	GUARDRAIL DETAILS

CONSTRUCTION PLANS
FOR
ROOF REPLACEMENT
FIRE STATION No. 7
3005 EAST 15th STREET
TULSA, OKLAHOMA
PROJECT NUMBER: SP17-24
CITY OF TULSA
DEPARTMENT OF PARKS, CULTURE & RECREATION



PROJECT SITE



PLANS PREPARED BY:



CYNTERGY
810 S CINCINNATI, STE 200
TULSA, OK. 74119
918-877-6000
CYNTERGY ENGINEERING P.L.L.C. CA#3537
EXP. 6-30-26

ROOF CONSULTANTS
5350 E. 46TH ST. SUITE 116
TULSA, OK 74135
918-660-6844



APPROVED BY

[Signature]

DIRECTOR OF PARKS, CULTURE &
RECREATION

[Signature]
CITY ENGINEER

6-25-25
DATE

06-26-25
DATE

UTILITY COORDINATION	
	NUMBER
ENGINEERING SERVICES	
WATER DESIGN	918-596-9566
WASTEWATER DESIGN	918-596-9564
TRANSPORTATION DESIGN	918-596-9636
TRAFFIC ENGINEERING DESIGN	918-596-9749
STORMWATER DESIGN	918-596-9498
OKLAHOMA NATURAL GAS CO.	918-831-8293
COX COMMUNICATIONS	918-286-4666
PUBLIC SERVICE CO. / AEP	918-599-2233
AT&T	918-576-2142
CALL OKIE	800-522-6543 OR 811

PAY ITEM SCHEDULE					
PAY ITEM	SPEC. NO.	DESCRIPTION	UNIT	QUANTITY	PAY ITEM NOTES
001	BIDDING DOCUMENTS & DIVISION ONE	GENERAL REQUIREMENTS	EA	1	GENERAL REQUIREMENTS: GENERAL CONDITIONS AND MISCELLANEOUS DIRECT AND INDIRECT PROJECT COSTS REQUIRED BY THE CONTRACT DOCUMENTS BUT NOT LISTED AS A SPECIFIC UNIT PRICE PAY ITEM IN THE PROPOSAL. INCLUDES, BUT IS NOT LIMITED TO: GENERAL CONDITIONS COVERING MICELLANEOUS NON-STAFFING COSTS DIRECTLY RELATED TO THE PROJECT, SUCH AS JOB TRAILER, MOBILIZATION, PERMIT FEES (OTHER THAN BUILDING PERMIT PROVIDED BY CITY OF TULSA), TEMPORARY UTILITIES, PERMANENT UTILITY CONNECTION FEES, BARRIERS, SCAFFOLDING, EQUIPMENT RENTAL, CLEANING AND DUMPSTERS, ETC. EACH UNIT PRICE WILL BE DEEMED TO INCLUDE AN AMOUNT CONSIDERED BY THE CONTRACTOR TO BE ADEQUATE TO COVER CONTRACTOR'S OVERHEAD AND PROFIT FOR EACH SEPARATELY IDENTIFIED ITEM.
002	012100	OWNER ALLOWANCE	ALLOW	1	ALLOWANCE INCLUDED FOR UNFORESEEN CONDITIONS REQUIRING ADDITIONAL WORK NOT DEFINED IN THE CONTRACT DOCUMENTS. USED ONLY AT THE DISCRETION OF THE OWNER, IN STRICT ACCORDANCE WITH THE REFERENCED SPECIFICATION SECTION.
003	053100	STEEL DECKING (REPAIR)	SF	1000	TREAT RUSTED METAL DECK WITH RUST PREVENTING SEALER.
004	053100	STEEL DECKING (OVERLAY)	SF	1000	REPAIR DAMAGED METAL DECK WITH OVERLAY OF 22 GAGE GALVANIZED FLAT METAL (AS INSTRUCTED BY ARCHITECT).
005	053100	STEEL DECKING (REPLACE)	SF	1000	REPLACE DAMAGED METAL DECK WITH OVERLAY OF 22 GAGE METAL DECK OF SAME PROFILE AS EXISTING (AS INSTRUCTED BY ARCHITECT).
006	055000	METAL FABRICATIONS	EA	1	EXTEND LADDER TO ACCOMMODATE ADDITIONAL HEIGHT OF ROOF HATCH AS INDICATED ON DRAWINGS.
007	055000	METAL FABRICATIONS	SYS	1	PROVIDE GUARDRAILS AS INDICATED ON DRAWINGS.
008	061000	ROUGH CARPENTRY (Wood Blocking and Curbing)	LF	100	REPLACE ROTTED DAMAGED WOODEN CANTS & NAILERS WITH NEW TREATED LUMBER, IN STRICT ACCORDANCE WITH THE DRAWINGS AND SPECIFICATIONS.
009	070150	PREPARATION FOR RE-ROOFING	SYS	1	REMOVE EXISTING ROOFING SYSTEM IN PREPARATION FOR NEW. INCLUDES REMOVAL AND DISPOSAL OF EXISTING ROOFING AND WATERPROOFING SYSTEM DOWN TO STRUCTURAL DECK, PARAPETS AND OTHER SUBSTRATES. INCLUDES EXISTING ABANDONED EQUIPMENT PLATFORMS, MECHANICAL EQUIPMENT, CURBS AND OTHER OBJECTS INTERFERING WITH NEW CONSTRUCTION AND INDICATED TO BE REMOVED. CONTRACTOR SHALL EXAMINE EXISTING SUBSTRATE(S) AND ADJACENT MATERIALS FOR RUST, DRY ROT AND OTHER DAMAGE WHICH COULD HINDER THE SUCCESSFUL APPLICATION OF NEW ROOFING SYSTEM. CONTACT ARCHITECT IMMEDIATELY UPON DISCOVERY OF DAMAGE.
010	075423	THERMOPLASTIC POLYOLEFIN (TPO) ROOFING	SYS	1	THERMOPLASTIC POLYOLEFIN (TPO) SINGLE-PLY MEMBRANE ROOFING SYSTEM, WITH 20 YEAR NDL WARRANTY. ROOFING SYSTEM INCLUDES, SINGLE-PLY MEMBRANE 115 MIL FLEECE-BACKED TPO, FULLY-ADHERED TO 1/2-INCH COVERBOARD, OVER TAPERED AND NON-TAPERED INSULATION (R=25 MIN), FASTENED TO DECK AS SHOWN ON DRAWINGS; MEMBRANE FLASHINGS, SHEET METAL FLASHINGS AND COUNTER-FLASHINGS, ROOF SPECIALTIES, COPINGS AND CURBS. INCLUDES ALL LABOR, EQUIPMENT, AND MATERIALS REQUIRED FOR A COMPLETE INSTALLATION OF A FULLY WARRANTED AND WATERPROOF MEMBRANE ROOFING SYSTEM, COMPLETE. CONTRACTOR SHALL CONFIRM ITS OWN QUANTITIES AND BID THE ENTIRE ROOF SYSTEM ACCORDINGLY. NO ADDITIONAL MATERIAL OR LABOR COST ALLOWED FOR VERTICAL FLASHING OR OTHER COMPONENTS OF THE COMPLETED ROOFING SYSTEM.
011	076200	CONDUCTOR HEADS & DOWNSPOUTS	EA	3	FURNISH AND INSTALL MATERIALS AND EQUIPMENT COMPLETE AND READY FOR INTENDED USE IN ACCORDANCE WITH DRAWINGS AND SPECIFICATIONS.
012	NOT USED				
013	077213	MANUFACTURED CURBS	EA	1	REPLACE EXISTING ROOF CURBS WITH NEW MANUFACTURED ROOF CURBS, SIZED APPROPRIATELY TO: 1) PROVIDE 8" (MIN) HEIGHT ABOVE NEW ROOF MEMBRANE TO TOP OF CURB AROUND ENTIRE PERIMETER OF CURB, AND 2) TO FIT EACH EXISTING AND/OR NEW RTU (INCLUDING ADAPTERS IF ANY) AND OTHER EQUIPMENT WITH CURBS INDICATED TO BE (RE)INSTALLED AFTER ROOF MEMBRANE IS IN PLACE, AND 3) TO FIT ROOF DECK OPENING AND FIELD CONDITION ENCOUNTERED. COORDINATE WITH RTU (AND OTHER EQUIPMENT) REMOVAL AND REPLACEMENT PAY ITEMS.
014	077233	ROOF HATCHES	EA	1	FURNISH AND INSTALL ALL MATERIALS, EQUIPMENT, AND LABOR COMPLETE AND READY FOR INTENDED USE IN ACCORDANCE WITH DRAWINGS AND SPECIFICATIONS. INSTALL ROOF HATCHES LEVEL AND IN ALIGNMENT WITH ACCESS LADDERS. INSTALL SUCH THAT WHEN COMPLETE, A FULL 8-INCH (MIN) OF ROOF MEMBRANE FALSHING IS SHOWING BETWEEN TOP OF MEMBRANE AND TOP OF FLASHING.
015	079200	JOINT SEALANTS	SYS	1	REMOVE EXISTING JOINT SEALANTS AS REQUIRED AND INDICATED. CLEAN, PRIME AND PREPARE SURFACES FOR NEW JOINT SEALANT APPLICATION. SEAL MASONRY WHERE CRACKS OR SETTLEMENT HAS OCCURED. PROVIDE ALL LABOR, EQUIPMENT AND MATERIALS AS REQUIRED FOR A COMPLETE INSTALLATION.
016	095100	ACOUSTICAL CEILINGS	EA	48	REPLACE WATER DAMAGED CEILING TILES AND LIGHT LENSES WITH NEW, AS INDICATED ON THE DRAWINGS, SPECIFIED AND AS DIRECTED.
017	099000	PAINTING & COATING	SYS	1	PREPARE SUFACES AND SUBSTRATES FOR PAINT SYTEMS APPLICATION. PAINT AREAS AS INDICATED ON DRAWINGS. PERFORM THE WORK IN STRICT ACCORDANCE WITH DRAWINGS AND SPECIFICATIONS, AND AS REQUIRED FOR A COMPLETE INSTALLATION.
018	220500	PLUMBING WORK	SYS	1	PERFORM MISCELLANEOUS WORK ON PLUMBING, WATER, GAS, DRAINAGE AS INDICATED ON DRAWINGS AND SPECIFICATIONS.
019	221100	PLUMBING PIPING-ROOF HYDRANT	EA	1	FURNISH AND INSTALL ROOF HYDRANT IN STRICT ACCORDANCE WITH DRAWINGS, SPECIFICATIONS AND MANUFACTURER'S INSTRUCTIONS. CONNECT TO PERMANENT POTABLE WATER SOURCE FROM INSIDE OF BUILDING.
020	221426	ROOF DRAINS - RETROFIT	EA	4	FURNISH AND INSTALL RETROFIT ROOF DRAINS AS INDICATED ON THE DRAWINGS AND SPECIFICATIONS. INCLUDES ALL LABOR, EQUIPMENT AND MATERIALS AS REQUIRED FOR A COMPLETE AND WATERTIGHT INSTALLATION.
021	230500	ROOFTOP UNIT - REMOVE AND REINSTALL	EA	9	REMOVE EXISTING RTU'S INCLUDING ADAPTERS, IF ANY, FROM ROOF IN ORDER TO RAISE OR REPLACE ROOF CURBS WITH NEW, ENSURING THAT DUCT CONNECTIONS TO THE UNITS ARE DISCONNECTED BEFORE LIFTING. ONCE NEW ROOF CURBS AND ROOF FLASHING ARE INSTALLED, EXTEND AND ADJUST EXISTING DUCT WORK AS REQUIRED TO PROPERLY ALIGN, SEA AND SEAL WITH REINSTALLED RTU'S AND ADAPTERS. CONNECT ELECTRICAL, FUEL AND CONDENSATE DRAINAGE TO RTU'S TO PROVIDE A COMPLETE AND FUNCTIONAL HVAC SYSTEM.
022	230500	TEMPORARY HVAC	WEEK	1	IN THE EVENT THAT EXISTING HVAC WILL BE DISABLED FOR MORE THAN 24 HOURS, PROVIDE TEMPORARY HEATING AND COOLING TO OCCUPIED SPACES.
023	260500	ELECTRICAL WORK	SYS	1	PROVIDE LABOR, EQUIPMENT AND MATERIALS REQUIRED TO DISCONNECT AND RECONNECT ELECTRICAL SERVICES TO ROOFTOP EQUIPMENT AS NECESSARY FOR THE PROPER INSTALLATION OF ROOFING SYSTEM. PRICE TO INCLUDE REPLACEMENT OF ELECTRICAL COMPONENTS WHICH ARE FOUND TO BE NO LONGER SERVICEABLE; (CONDUIT, JUNCTION BOXES, BREAKERS, ETC.) IN ORDER TO RESTORE CIRCUITS TO PROPER OPERATION AS QUICKLY AS POSSIBLE. COORDINATE ROOF PENETRATIONS WITH ROOFING INSTALLATION.

UNIT KEY	
ALLOW	ALLOWANCE
EA	EACH
LF	LINEAR FEET
SF	SQUARE FEET
SYS	SYSTEM
WEEK	WEEK

GENERAL NOTES

ALL CONSTRUCTION SHALL BE IN STRICT ACCORDANCE WITH CURRENT CITY OF TULSA CODES AND ORDINANCES, ENGINEERING SERVICE STANDARDS. CITY OF TULSA ORDINANCE AND CODES AMENDMENTS SUPERCEDE NATIONAL CODES.

CONTRACTOR SHALL BE RESPONSIBLE FOR DAMAGE TO ALL STRUCTURES, LANDSCAPING, PAVING, AND ANY OTHER ITEMS LOCATED WITH IN AND OUTSIDE THE WORK AREA. ANY DAMAGE TO PERMANENT ITEMS INCURRED BY THE CONTRACTOR THROUGH ITS WORK IN THIS CONTRACT SHALL BE REPAIRED TO ORIGINAL CONDITION BY THE CONTRACTOR AT ITS OWN EXPENSE.

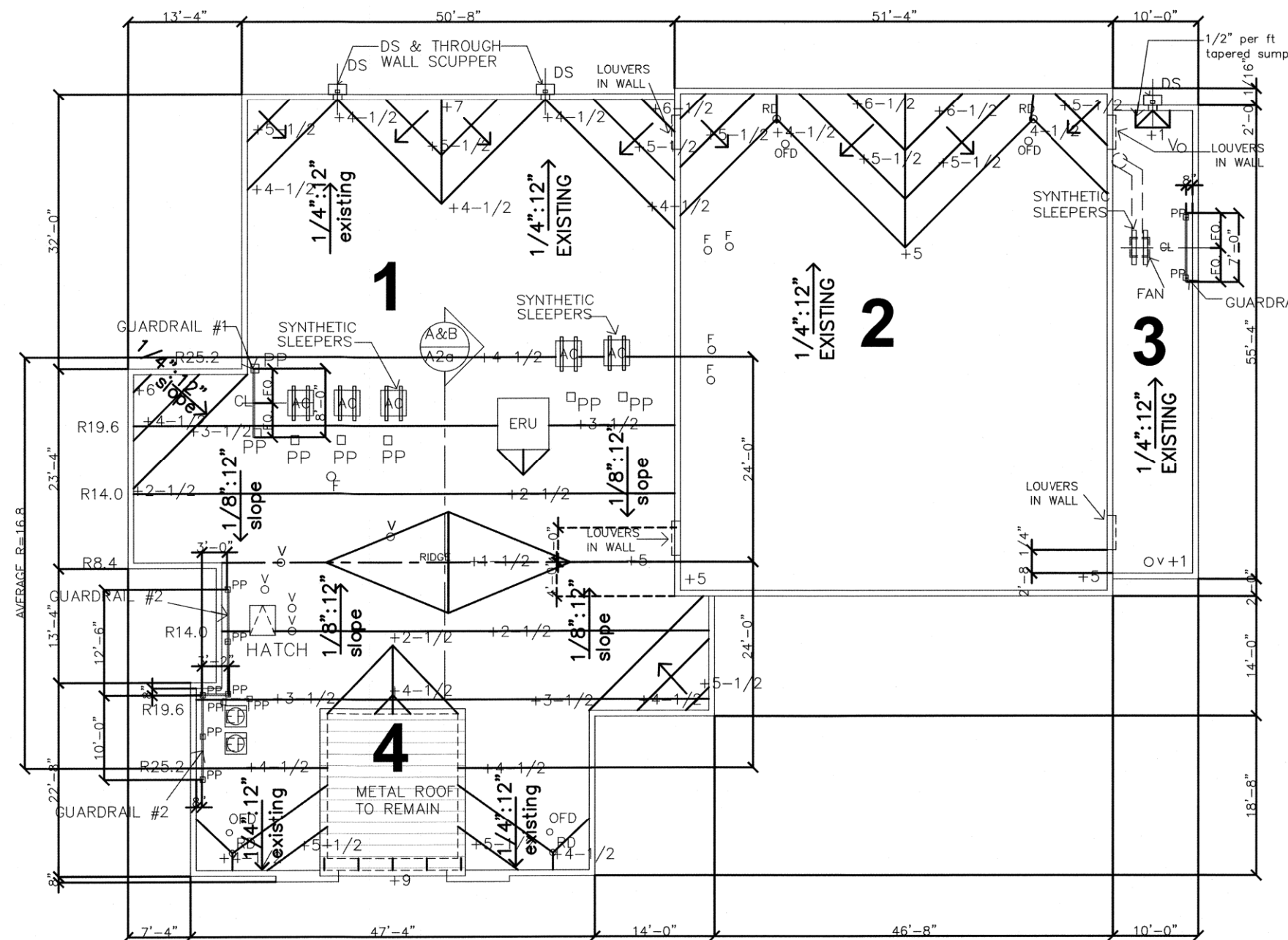
CONTRACTORS SHALL COORDINATE WITH IDENTIFIED MAINTENANCE OPERATIONS PERSONNEL FOR APPLICATION, SHUT OFF, AND REMOVAL OF ALL UTILITIES.

CONTRACTOR SHALL FIELD VERIFY ALL DIMENSIONS AND QUANTITIES.



FIRE STATION No. 7 3005 EAST 15TH STREET TULSA, OKLAHOMA	
PROJECT NO. SPI7-24	
CITY OF TULSA, OKLAHOMA	
PLANS AND ESTIMATES PREPARED BY: CYNTERGY	
ROOFING CONSULTANTS: R. EDWARD OWEN RRC, AIA, CCS, CCCA	

MARK	REVISION	BY	DATE	PLAN SCALE:	DRAWN	REQ	APPROVED: CITY DIRECTOR
				AS NOTED	DESIGNED	REQ	
					SURVEY		
				PROFILE SCALE:	PROJ. MGR.	<i>6/25</i>	
				HORIZONTAL:	LEAD ENGR.	<i>6/25</i>	
				1" =	FIELD MGR.	<i>6/25</i>	
				RECOMMENDED:			
				VERTICAL:	DESIGN MANAGER		
				1" =			
				FILE:	DRAWING:		DATE: <i>6/25</i>
				ATLAS PAGE NO.			SHEET OF 5 SHEETS
				SHEET NAME:	PAY ITEMS		SHEET NO. PI

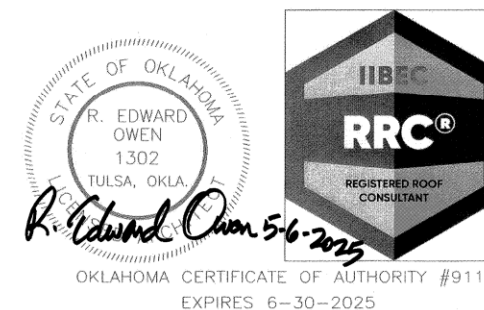


Scope of Work

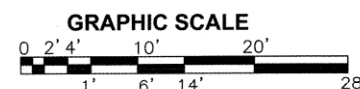
1. INSTALL 2 LAYERS 2-1/4" ISOCYANURATE FOAM ROOF INSULATION MECHANICALLY FASTENED TO THE ROOF DECK AT ROOF AREAS 1 & 2.
2. INSTALL 1 LAYER 1" ISOCYANURATE FOAM ROOF INSULATION MECHANICALLY FASTENED TO THE ROOF DECK AT ROOF AREA 3.
3. INSTALL 1/4' PER FOOT TAPERED ISOCYANURATE FOAM CRICKETS AT ROOF
4. INSTALL 1/8" PER FOOT TAPERED INSULATION AS SHOWN AT ROOF AREA #1.
5. INSTALL 1/2" PER FOOT TAPERED INSULATION SUMP AT ROOF AREA #3.
6. INSTALL 1/2" HIGH DENSITY COVER BOARD IN ADHESIVE AT ROOF AREAS 1, 2 & 3.
7. OPEN WEEP HOLES IN OFFSET WALLS THAT HAVE BEEN SEALED AT ROOF AREAS 1 & 3.

Symbols Legend

+2	THICKNESS OF INSULATION IN INCHES	PP	PIPE PENETRATION BOX
RD	ROOF DRAIN	DS	DOWN SPOUT
OFD	OVERFLOW DRAIN	2% SLOPE	SLOPE
EF	EXHAUST FAN CURB MOUNTED	V	PLUMBING VENT
AC	AIR CONDITIONING UNIT ON SLEEPERS	X	ROOF CORE REFER TO PHOTO #12
ERU	ROOF TOP HVAC UNIT CURB MOUNTED	F	FLUE
EF	EXHAUST FAN ABOVE ROOF MOUNTED ON WOOD SLEEPERS		



1/8" per ft. taper r=16.8 FIRE STATION No. 7 TAPERED INSULATION LAYOUT PLAN



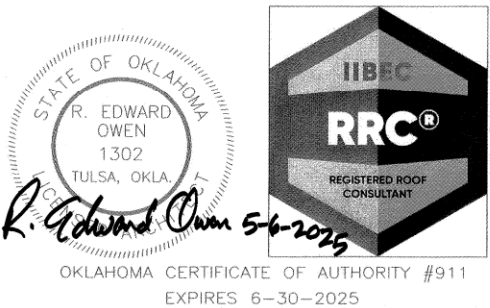
FIRE STATION No. 7 3005 EAST 15TH STREET TULSA, OKLAHOMA			
PROJECT NO. SPI7-24			
CITY OF TULSA, OKLAHOMA			
PLANS AND ESTIMATES PREPARED BY: CYNTERGY			
ROOFING CONSULTANTS: R. EDWARD OWEN RRC, AIA, CCS, CCCA			
MARK	REVISION	BY	DATE
AS NOTED	DESIGNED	REG	REO
PROFILE SCALE:	PROJ. MGR.	W 6/25	
HORIZONTAL:	LEAD ENGR.	W 6/25	
VERTICAL:	FIELD MGR.	W 6/25	
ATLAS PAGE NO.	DESIGN MANAGER		
SHEET NAME:	DRAWING		
TAPERED INSULATION LAYOUT PLAN			
APPROVED:			DATE: 6/25
SHEET OF 5 SHEETS			SHEET NO. A-2

Scope of Work

- BASE BID
1. INSTALL 60 MIL FLEECEBACK TPO ROOF MEMBRANE IN FOAM ADHESIVE AT ROOF AREAS #1, 2 & 3 WITH 20 YR. WATER TIGHTNESS & 2" HAIL RESISTANCE WARRANTY.
 2. INSTALL NEW PREFINISHED METAL COUNTER FLASHING AND THROUGH WALL SCUPPER FLASHINGS AT PERIMETER PARAPET WALLS WITH NEW COLLECTOR HEADS & DOWN SPOUTS.
 3. INSTALL NEW RETROFIT DRAINS AT EXISTING ROOF DRAINS & OVER FLOW DRAINS.
 4. INSTALL 60 MIL TPO BASE FLASHING & PREFINISHED METAL COUNTER FLASHING AT ROOF TOP EQUIPMENT CURBS, OFFSET WALLS & PARAPET WALLS.
 5. EXTEND EQUIPMENT CURBS TO A MINIMUM 8" ABOVE NEW ROOF ELEVATION.
 6. INSTALL NEW PIPE PENETRATION BOXES & PLUMBING VENT BOOT & FLUE FLASHINGS.
 7. INSTALL 3' WIDE WALK PADS AT LOCATIONS SHOWN.
 8. REPLACE (4) 24"x24" CEILING TILE.
 9. ADD 3 NEW GUARD RAILS.

Symbols Legend

RD	RETROFIT ROOF DRAIN REF. DETAIL D/R1	PP	PIPE PENETRATION BOX REF. DETAIL B/R3
OFD	RETROFIT OVERFLOW DRAIN REF. DETAIL D/R1	DS	DOWN SPOUT REF. DETAIL B/R4
EF	EXHAUST FAN CURB MOUNTED REF. DETAIL A/R4	SLOPE	SLOPE
AC	AIR CONDITIONING UNIT ON SLEEPERS REF. DETAIL D/R3	V	PLUMBING VENT REF. DETAIL E/R2
ERU	ROOF TOP HVAC UNIT CURB MOUNTED REF. DETAIL A/R4	EF	EXHAUST FAN ABOVE ROOF MOUNTED ON WOOD SLEEPERS REF. DETAIL D/R3
A/R	DETAIL NUMBER DETAIL REFERENCE SHEET NUMBER	F	FLUE REF. DETAIL A/R3
	3' WIDE WALK PAD REF. DETAIL C/R1		



FIRE STATION No. 7
3005 EAST 15TH STREET
TULSA, OKLAHOMA

PROJECT NO. SPI7-24

CITY OF TULSA, OKLAHOMA

PLANS AND ESTIMATES PREPARED BY:
CYNERGY

ROOFING CONSULTANTS:
**R. EDWARD OWEN
RRC, AIA, CCS, CCCA**

MARK	REVISION	BY	DATE	PLAN SCALE:	DRAWN	REQ	APPROVED:
				AS NOTED	DESIGNED	REQ	
				SURVEY			
				PROFILE SCALE:	PROJ. MGR.		
				HORIZONTAL:	LEAD ENGR.		
				FIELD MGR.			
				RECOMMENDED:			
				DESIGN MANAGER			
				FILE:	DRAWING:		
				ATLAS PAGE NO.			
				SHEET NAME:			
				NEW ROOF PLAN			

A NEW ROOF PLAN
1/8" = 1'-0"





NOT TO SCALE

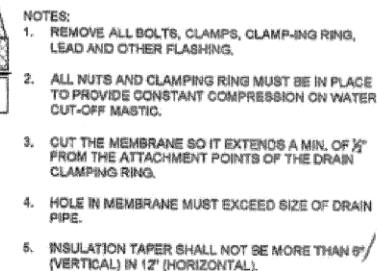


NOT TO SCALE

-

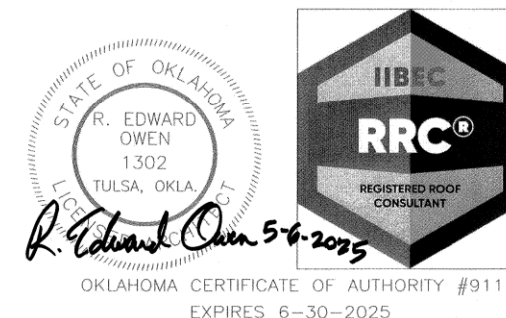
NIGHT SEAL INSULATION (TYP.)

NOT TO SCALE



RETROFIT ROOF DRAIN DETAIL

NOT TO SCALE



OKLAHOMA CERTIFICATE OF AUTHORITY #911
EXPIRES 6-30-2025

FIRE STATION No. 7
3005 EAST 15TH STREET
TULSA, OKLAHOMA

PROJECT NO. SPI7-24

CITY OF TULSA, OKLAHOMA

PLANS AND ESTIMATES PREPARED BY:

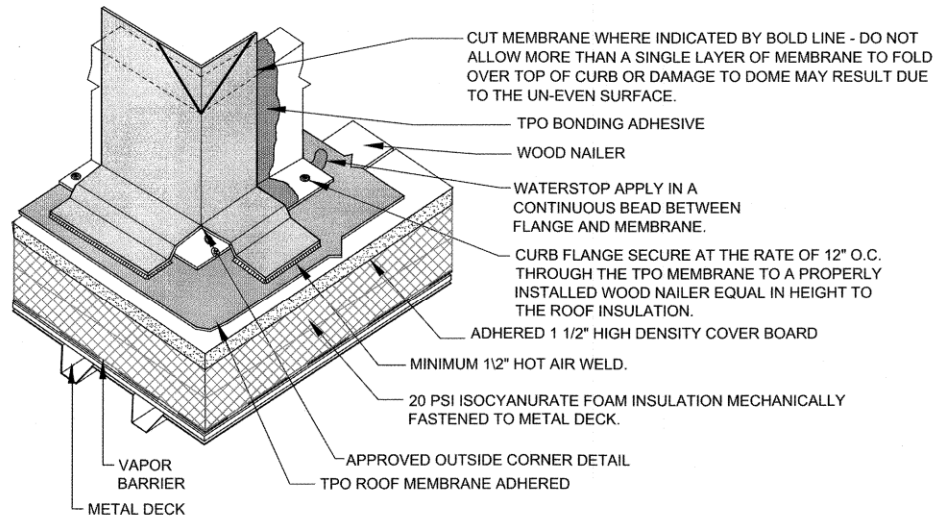


ROOFING CONSULTANTS:

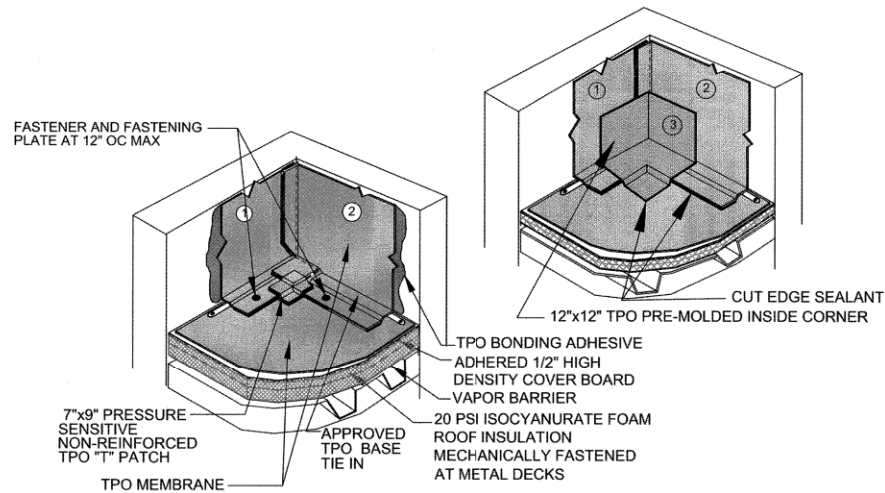
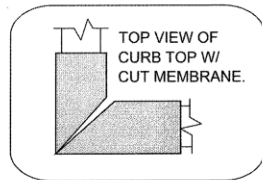
R. EDWARD OWEN
RRC, AIA, CCS, CCCA

MARK	REVISION	BY	DATE	PLAN SCALE:	DRAWN	REO	APPROVED:
				AS NOTED	DESIGNED	REO	
					SURVEY		
				PROFILE SCALE:	PROJ. MGR.		
					LEAD ENGR.		
				HORIZONTAL: F =	FIELD MGR.		
					RECOMMENDED:		
				VERTICAL F =	DESIGN MANAGER		
				FILE:	DRAWING:		
				ATLAS PAGE NO.			
				SHEET NAME:			
				TPO DETAILS			

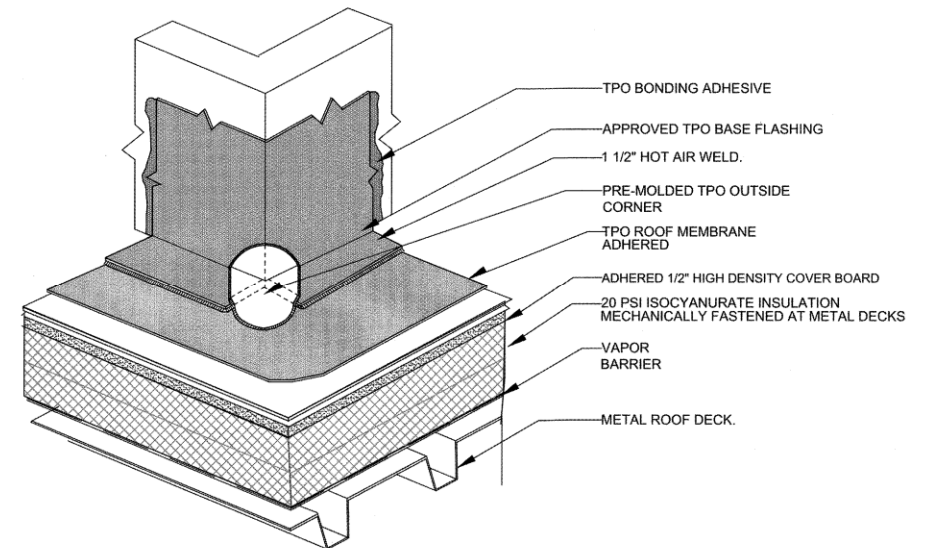
R-1



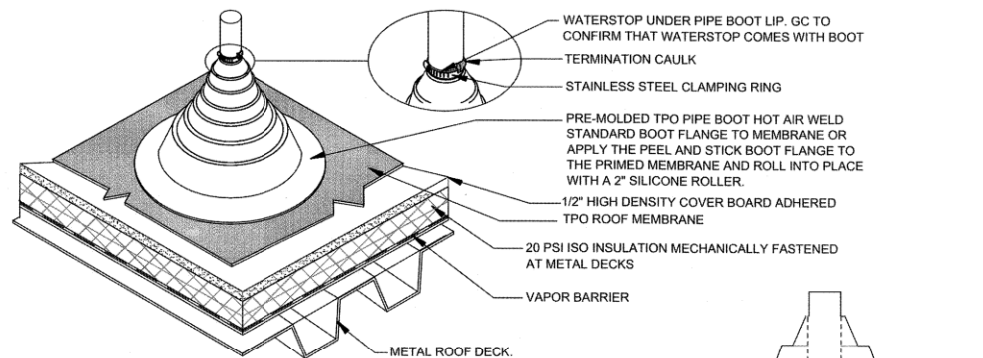
A OUTSIDE CORNER FLASHING
NOT TO SCALE



B PRE-MOLDED INSIDE CORNER (TYP.)
NOT TO SCALE



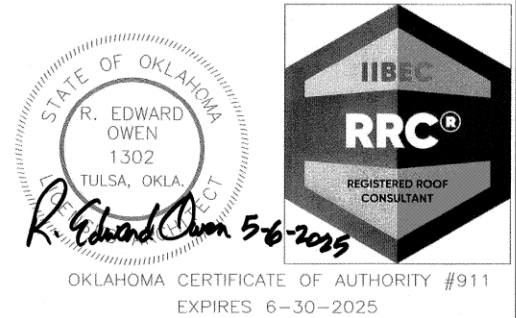
C ONE PIECE FLASHING WITH PRE-MOLDED OUTSIDE CORNER (TYP.)
NOT TO SCALE




MEMBRANE SECUREMENT AT 12" OUT FROM PENETRATION AND 12" O.C. - THIS CAN BE ACCOMPLISHED WITH SEAM PLATES AND FASTENERS OVERLAP WITH EITHER TPO COVER TAPE, A TARGET PATCH OF TPO FIELD MEMBRANE FOR THE BOOT FLANGE TO BE WELDED TO OR WITH 6" TPO REINFORCED FLASHING. WHEN INSTALLATION OF THE PIPE BOOT WOULD OVERLAP A FIELD SEAM INSTALL A MINIMUM 24" X 24" TARGET PATCH CENTERED ON THE PENETRATION BEFORE INSTALLING THE PIPE BOOT. AS AN ALTERNATIVE - MEMBRANE SECUREMENT MAY ALSO BE INSTALLED CLOSE TO THE PENETRATION AND FLASHED WITH THE PIPE BOOT AS SHOWN HERE.

D NOT USED
NOT TO SCALE

E PRE-FABRICATED PIPE BOOT (TYP.)
NOT TO SCALE



OKLAHOMA CERTIFICATE OF AUTHORITY #911
EXPIRES 6-30-2025

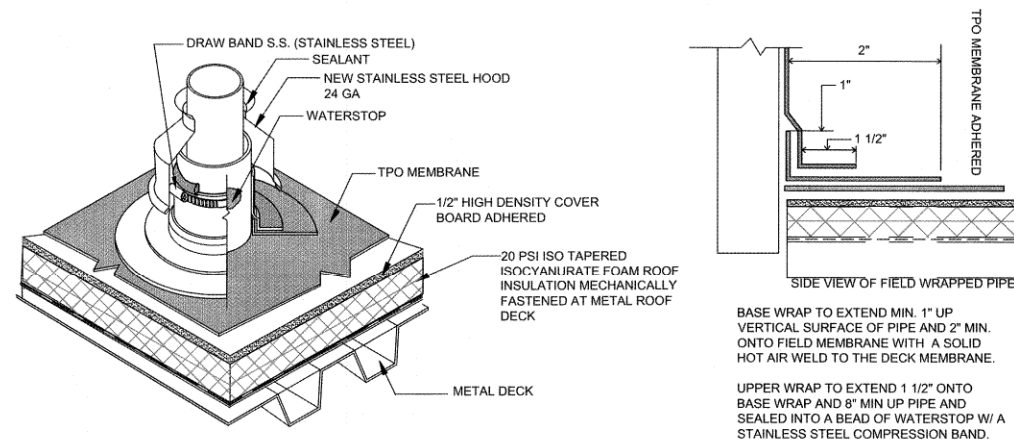
FIRE STATION No. 7 3005 EAST 15TH STREET TULSA, OKLAHOMA	
PROJECT NO. SPI7-24	
CITY OF TULSA, OKLAHOMA	
PLANS AND ESTIMATES PREPARED BY:  CYNERGY	
ROOFING CONSULTANTS: R. EDWARD OWEN RRC, AIA, CCS, CCCA	

MARK	REVISION	BY	DATE	PLAN SCALE:	DRAWN	REO	APPROVED:
				AS NOTED	DESIGNED	REO	
					SURVEY		
				PROFILE SCALE:	PROJ. MGR.		
				HORIZONTAL, 1" =	LEAD ENGR.		
					FIELD MGR.		
					RECOMMENDED:		
				VERTICAL, 1" =	DESIGN MANAGER		
				FILE:	DRAWING:		
				ATLAS PAGE NO.			
				SHEET NAME:			
				TPO DETAILS			

DATE: 06-24-25

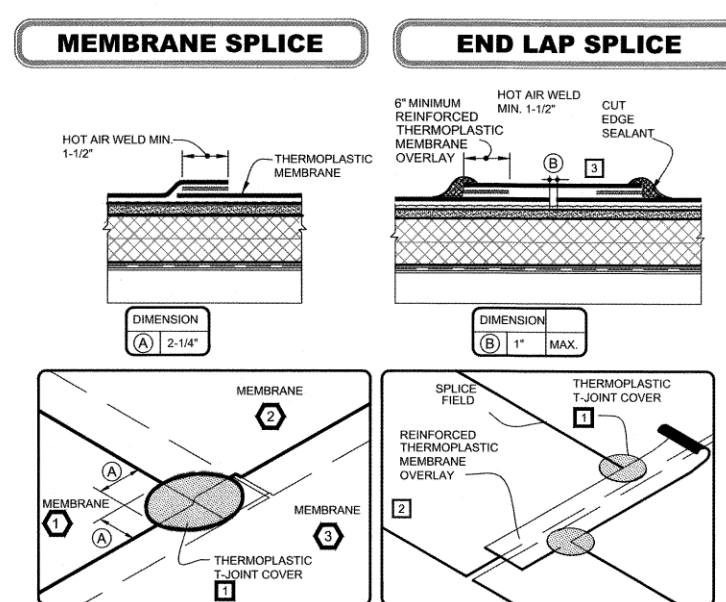
SHEET OF 6 SHEETS

SHEET NO. R-2



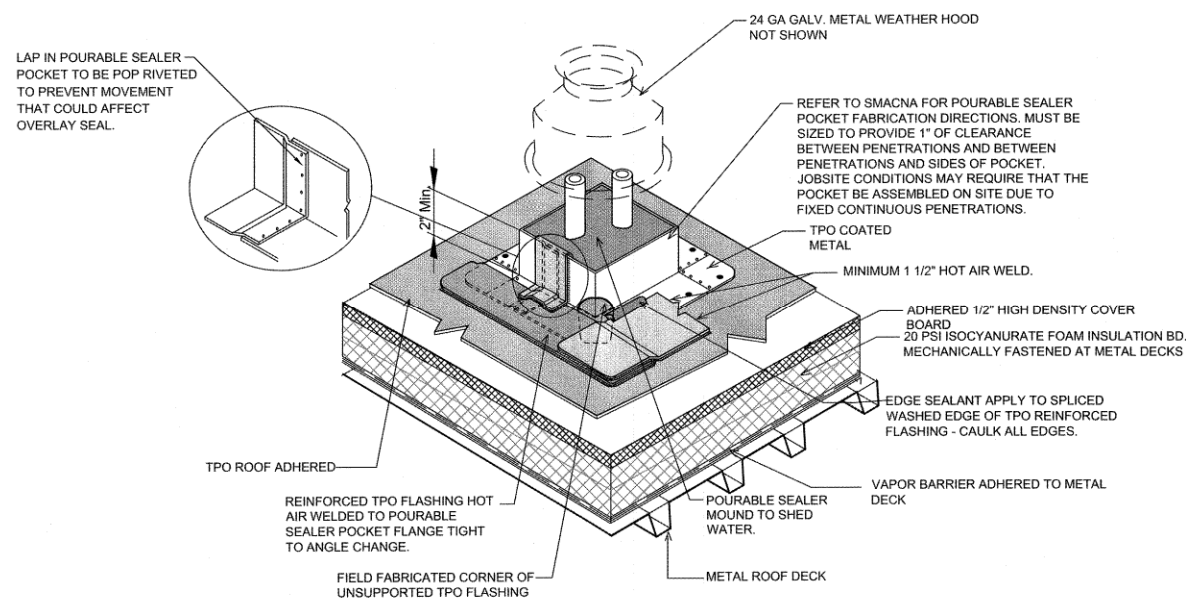
HOT PIPE FLASHING (TYP.)

A NOT TO SCALE



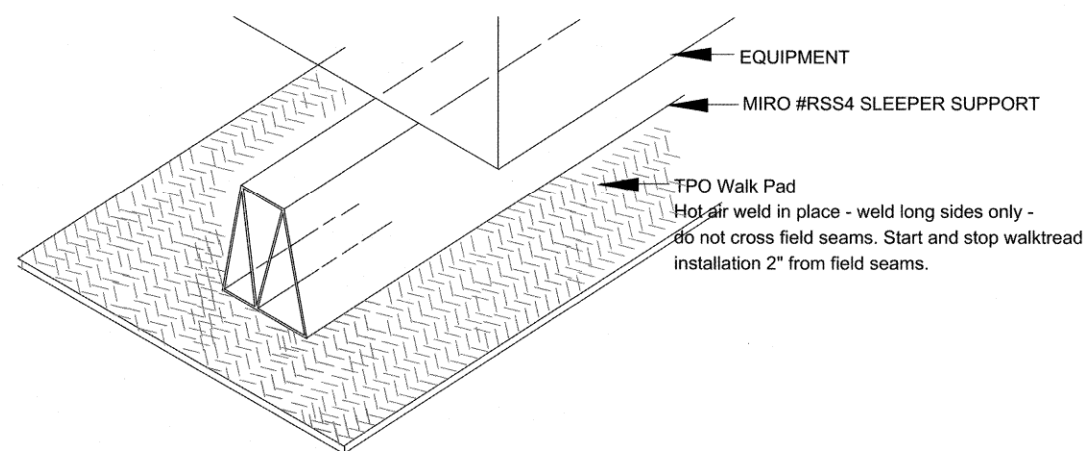
THERMOPLASTIC FLEECEBACK MEMBRANE SPLICE (TYP.)

C NOT TO SCALE



POURABLE SEALER POCKET FORMED WITH TPO COATED METAL

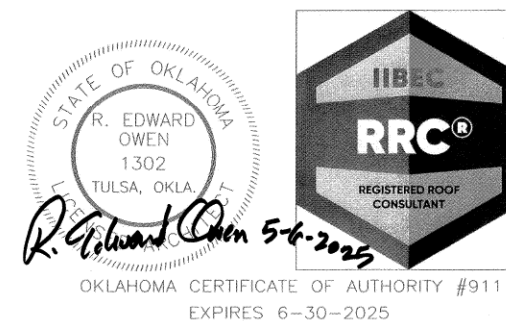
B NOT TO SCALE



SLEEPER DETAIL

D NOT TO SCALE

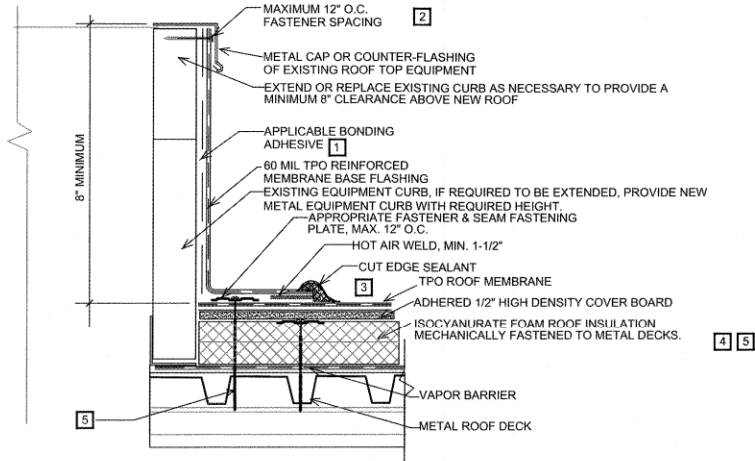
- NOTES:
- 1 WHEN USING 80-MIL THERMOPLASTIC FLEECEBACK MEMBRANE, APPLY A 4-1/2" DIAMETER THERMOPLASTIC "T-JOINT" COVER AT ALL FIELD SPLICE INTERSECTIONS.
 - 2 APPROXIMATELY 1/8" DIAMETER BEAD OF CUT-EDGE SEALANT IS REQUIRED ON CUT EDGES OF REINFORCED TPO MEMBRANE.
- THIS SYMBOL REFERS TO THE SHEET NUMBER WHERE MORE THAN ONE SHEET INTERSECT.



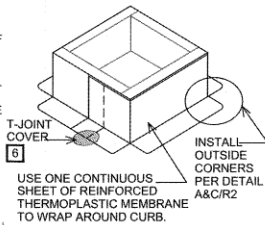
FIRE STATION No. 7 3005 EAST 15TH STREET TULSA, OKLAHOMA	
PROJECT NO. SPI7-24	
CITY OF TULSA, OKLAHOMA	
PLANS AND ESTIMATES PREPARED BY: CYNERGY	
ROOFING CONSULTANTS: R. EDWARD OWEN RRC, AIA, CCS, CCCA	

MARK	REVISION	BY	DATE	PLAN SCALE:	DRAWN	REO	APPROVED:
				AS NOTED	DESIGNED	REO	
					SURVEY		
				PROFILE SCALE:	PROJ. MGR.		
				HORIZONTAL, 1" =	LEAD ENGR.		
				VERTICAL, 1" =	FIELD MGR.		
					RECOMMENDED:		
					DESIGN MANAGER		
				FILE:	DRAWING:		
				ATLAS PAGE NO.			
				SHEET NAME:			
				TPO DETAILS			

R-3

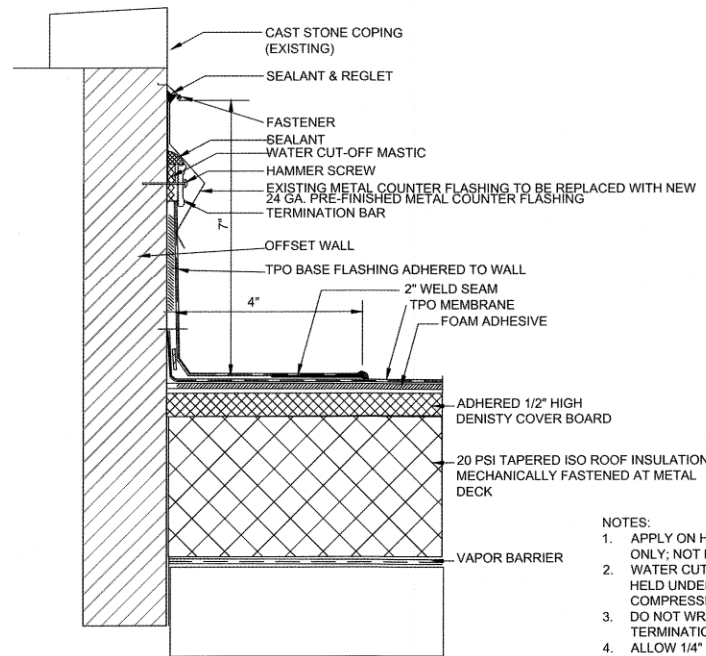


- NOTES:
1. WHEN USING TPO MEMBRANE, BONDING ADHESIVE IS NOT REQUIRED WHEN THE FLASHING HEIGHT IS 12\"/>



A EQUIPMENT CURB FLASHING

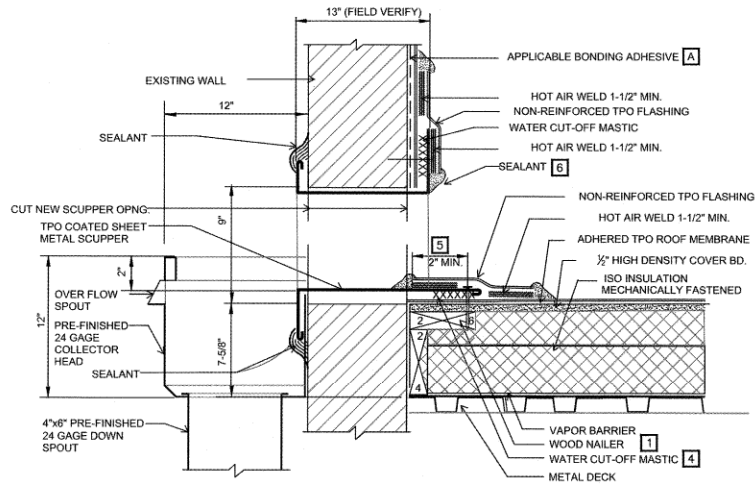
NOT TO SCALE



- NOTES:
1. APPLY ON HARD SMOOTH SURFACE ONLY; NOT FOR USE ON WOOD.
 2. WATER CUT-OFF MASTIC MUST BE HELD UNDER CONSTANT COMPRESSION.
 3. DO NOT WRAP COMPRESSION TERMINATION AROUND CORNERS.
 4. ALLOW 1/4\"/>

D TERM BAR AND SEALANT AT COUNTER FLASHING

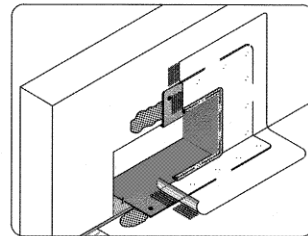
NOT TO SCALE



NOTES:

1. WOOD NAILERS ARE INSTALLED ONLY AT SCUPPERS TO SECURE METAL SLEEVE AND MUST EXTEND PAST THE WIDTH OF METAL SLEEVE FLANGE.
2. INSTALL WALL FLASHING PRIOR TO SCUPPER INSTALLATION.
3. METAL SCUPPER BOX MUST HAVE CONTINUOUS FLANGES WITH ROUNDED CORNERS.
4. WATER CUT-OFF MASTIC UNDER SCUPPER FLANGE MUST BE UNDER CONSTANT COMPRESSION.
5. SCUPPER FLANGES MUST BE TOTALLY COVERED BY NON-REINFORCED FLASHING WITH MINIMUM 2\"/>

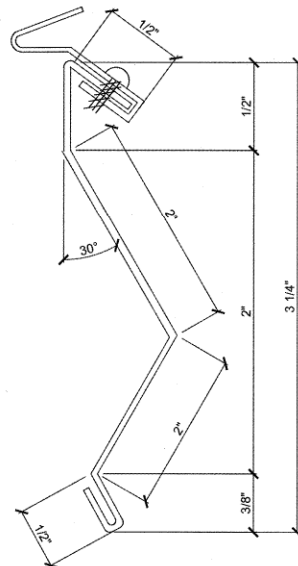
CAV-GRIP ADHESIVE MAY BE USED



SCUPPER WITH COATED METAL

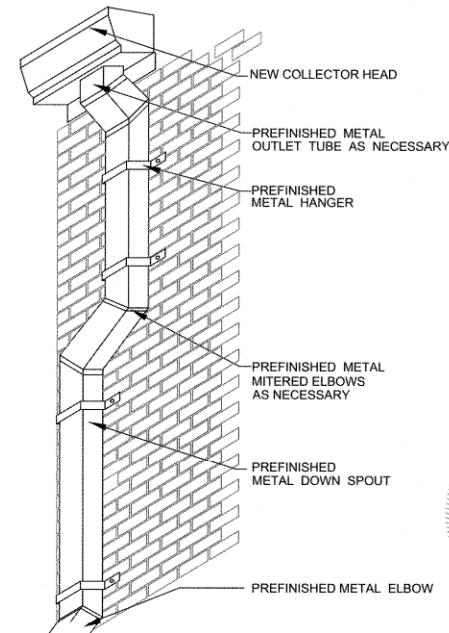
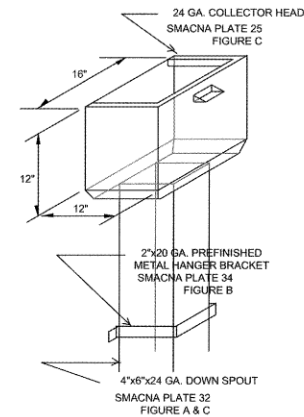
B THRU-WALL SCUPPER COLLECTOR HEAD & DOWN SPOUT

NOT TO SCALE



E COUNTER FLASHING DIMENSIONS

NOT TO SCALE



C DOWN SPOUT TRANSITIONS

NOT TO SCALE



OKLAHOMA CERTIFICATE OF AUTHORITY #911
EXPIRES 6-30-2025

FIRE STATION No. 7
3005 EAST 15TH STREET
TULSA, OKLAHOMA

PROJECT NO. SPI7-24

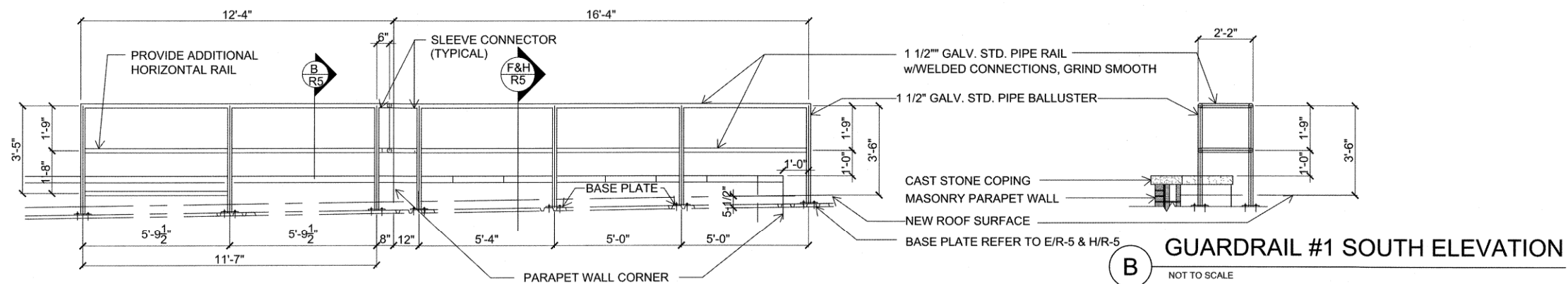
CITY OF TULSA, OKLAHOMA

PLANS AND ESTIMATES PREPARED BY:
CYNERGY

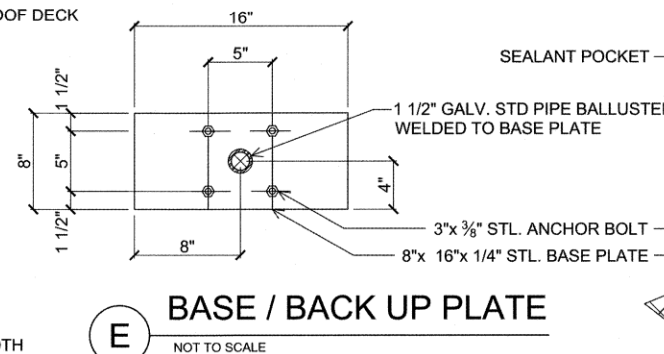
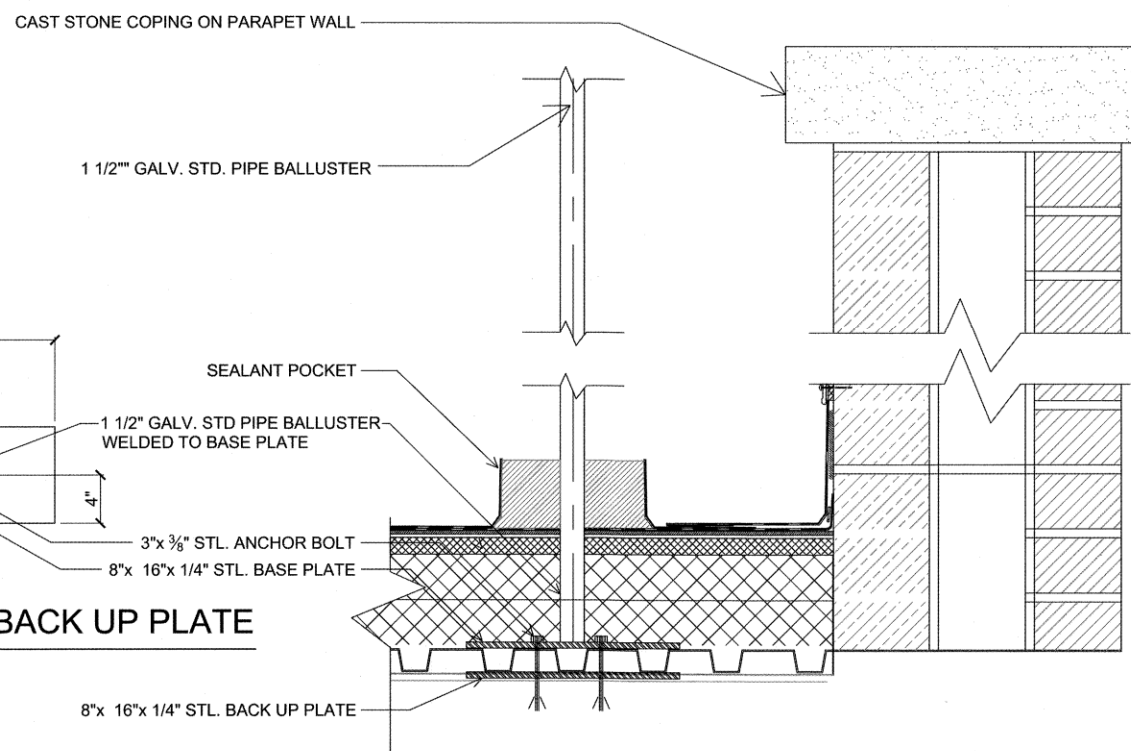
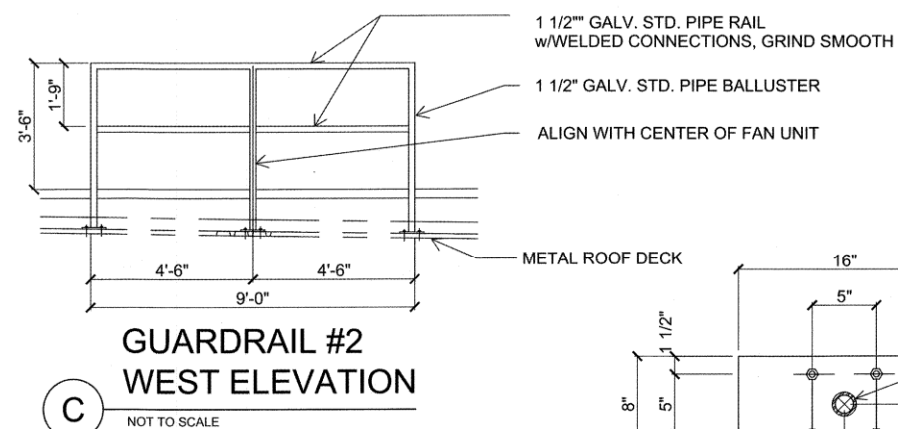
ROOFING CONSULTANTS:
**R. EDWARD OWEN
RRC, AIA, CCS, CCCA**

MARK	REVISION	BY	DATE	PLAN SCALE:	DRAWN	REO	APPROVED:
				AS NOTED	DESIGNED	REO	
					SURVEY		
				PROFILE SCALE:	PROJ. MGR.	AK 5/6/25	
					LEAD ENGR.	AK 6/25	
				HORIZONTAL, 1" =	FIELD MGR.	AK 6/25	
					RECOMMENDED:		
				VERTICAL, 1" =	DESIGN MANAGER		
				FILE:	DRAWING:		
				ATLAS PAGE NO:			
				SHEET NAME:			
				TPO DETAILS			

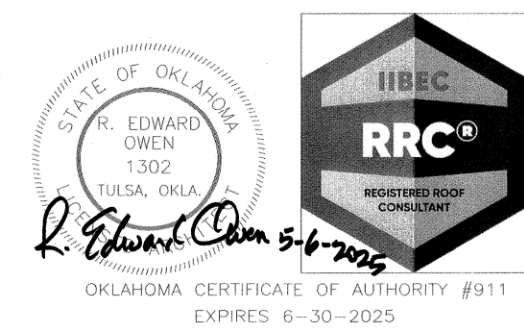
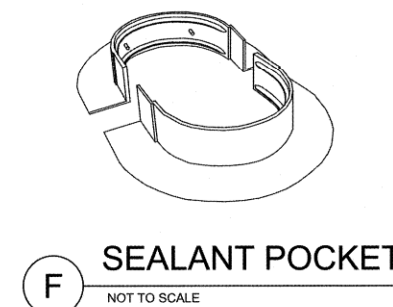
SHEET OF 5 SHEETS
SHEET NO. **R-4**



A GUARDRAIL #1 EAST ELEVATION
NOT TO SCALE



H BASE PLATE
NOT TO SCALE



FIRE STATION No. 7 3005 EAST 15TH STREET TULSA, OKLAHOMA	
PROJECT NO. SPI7-24	
CITY OF TULSA, OKLAHOMA	
PLANS AND ESTIMATES PREPARED BY: CYNTERGY	
ROOFING CONSULTANTS: R. EDWARD OWEN RRC, AIA, CCS, CCCA	

MARK	REVISION	BY	DATE	PLAN SCALE:	DRAWN	REQ	APPROVED:
				AS NOTED	DESIGNED	REQ	
					SURVEY		
				PROFILE SCALE:	PROJ. MGR.		
					LEAD ENGR.		
				HORIZONTAL, 1" =	FIELD MGR.		
					RECOMMENDED:		
				VERTICAL, 1" =	DESIGN MANAGER		
				FILE:	DRAWING:		
				ATLAS PAGE NO.			
				SHEET NAME:			
				GUARDRAIL DETAILS			R-5