

**WATER AND SEWER**  
Engineering Design

**DATE:**  
March 24, 2025

**TO:**  
Plan Holders  
  
Contractors

**FROM:**  
Jenna Richardson  
  
918-596-9637

[jennarichardson@cityoftulsa.org](mailto:jennarichardson@cityoftulsa.org)

## EMAIL TRANSMITTAL

ADDENDUM NO. 2

**PROJECT NO. WPC 25-1 FY'25 WATER POLLUTION  
CONTROL CAPITAL EQUIPMENT REPLACEMENTS**

Number of pages: **7**

Please email a signed cover sheet to [kteel@cityoftulsa.org](mailto:kteel@cityoftulsa.org)  
as acknowledgement of receipt.

Thank you,

---

Signature

---

Company

---

Date

# TULSA METROPOLITAN UTILITY AUTHORITY

175 E. 2<sup>nd</sup> Street

TULSA, OKLAHOMA 74103

March 24, 2025

**ADDENDUM NO. 2  
TO  
WATER POLLUTION CONTROL  
CAPITAL EQUIPMENT REPLACEMENTS  
RMUA PROJECT NO. WPC 25-1**

This Addendum No. 2, consisting of one (1) item is hereby made a part of the Contract Documents to the same extent as though it were originally included therein, and shall supersede anything contained in the Plans and Specifications with which it might conflict. **All addenda to the contract documents should be denoted on the last page of the Proposal in the space provided.**

All other provisions of the Plans and Specifications shall remain in full force and effect.

**CITY OF TULSA WATER AND SEWER DEPARTMENT**

*Cindy J. Cantero*  
Digitally signed by  
Cindy Cantero  
Date: 2025.03.24  
09:55:51 -05'00'

Cindy Cantero  
Water Pollution Control Section Manager



---

**ENGINEERS**

**ADDENDUM NO. 2  
MARCH 24, 2025**

**PROJECT NO. WPC 25-1  
FY'25 WATER POLLUTION CONTROL  
CAPITAL EQUIPMENT REPLACEMENTS**

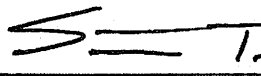
---

This Addendum No. 2, consisting of one (1) item is hereby made a part of the Contract Documents to the same extent as though it were originally included therein, and shall supersede anything contained in the Plans and Specifications with which it might conflict. **All addenda to the contract documents should be denoted on the last page of the Proposal in the space provided.**

**CONSTRUCTION DRAWINGS:**

1. REMOVE AND REPLACE DRAWINGS 203.640D, 203.640F & 203.640G WITH ATTACHED DRAWINGS 203.640D, 203.640F & 203.640G MARKED ADDENDUM NO. 2.

**HOLLOWAY, UPDIKE AND BELLEN, INC.**

  
Stephen Tolar, P.E., S.E.  
President

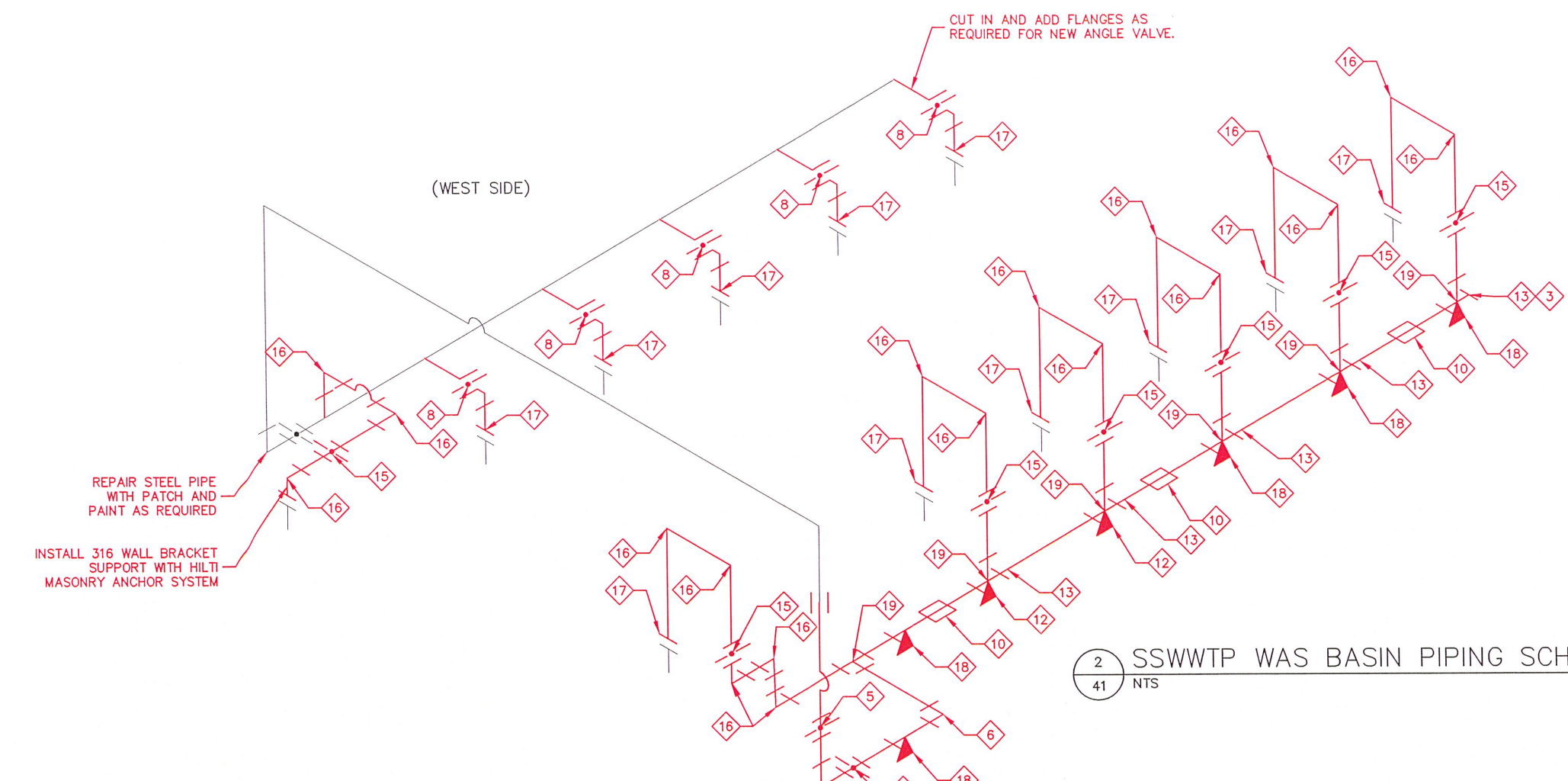


END ADDENDUM NO. 2

---

**HOLLOWAY, UPDIKE AND BELLEN, INC.**

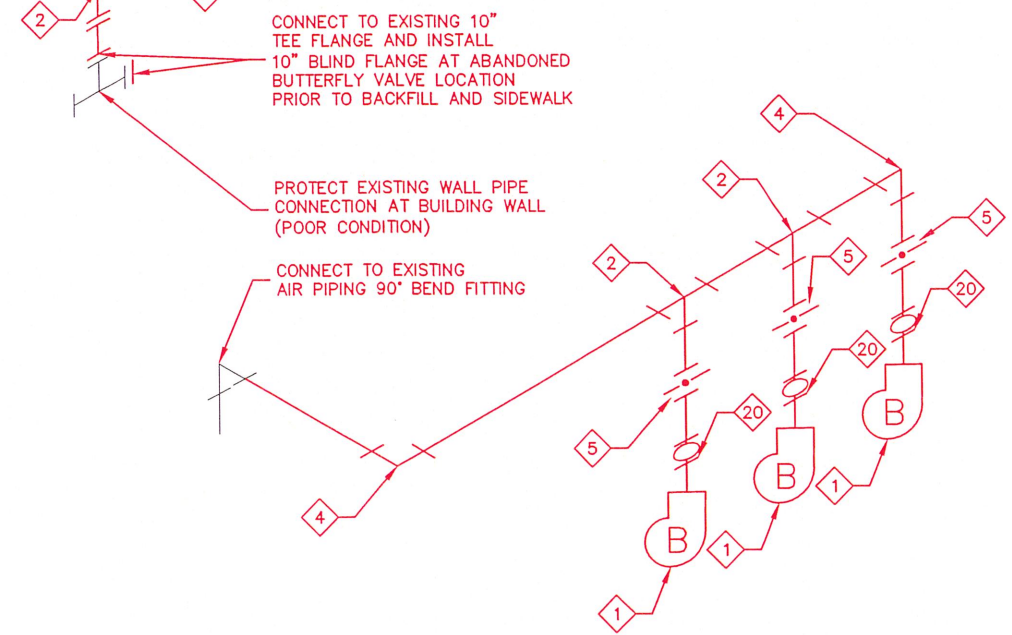
Z:\Projects\2024\24TUAWPC25-1\Design\Production\Plans\203.640-CR1 Basin Blower Piping Schematic.dwg, 3/24/2025 9:24:19 AM



- NOTES:**
1. BLOWER PIPING SCHEMATIC HAS BEEN PROVIDED TO SHOW SCOPE OF WORK REQUIRED FOR A COMPLETE AND OPERATIONAL SYSTEM. REFER TO DETAILED DRAWINGS FOR ADDITIONAL REQUIREMENTS.
  2. EXTERIOR AIR PIPING SHALL BE UNLINED SCHEDULE 40 WELDED STEEL PIPE.
  3. INTERIOR PIPING IN BLOWER ROOM SHALL BE UNLINED FLANGED DIP WITH VITON GASKETS.
  4. PROVIDE AND INSTALL WELD NECK FLANGES AS SHOWN ON THE DRAWINGS OR AS REQUIRED FOR INSTALLATION OF FLANGED EQUIPMENT.
  5. PREPARE AND PAINT ALL NEW AND MODIFIED PIPING, FITTING AND VALVES. REFER TO SPECIFICATION SECTION 204.5 FOR REQUIREMENTS.
  6. ALL GASKETS FOR EXTERIOR PIPING SHALL BE VITON, OR EQUAL RATED FOR HIGH TEMPERATURE AIR SERVICE. SEE NOTE #1. FIELD VERIFY & COORDINATE FINAL PIPING LENGTH AS REQUIRED FOR EACH LOCATION.
  7. OWNER RETAINS SALVAGE RIGHTS TO ALL UNUSED EQUIPMENT AND MATERIALS. ALL MATERIALS NOT CLAIMED BY OWNER SHALL BE DISPOSED OF BY CONTRACTOR.
  8. CONTRACTOR SHALL FIELD MEASURE AND COORDINATE PIPING INSTALLATION AS REQUIRED FOR A COMPLETE AND OPERABLE SYSTEM.
  9. ALL AIR SERVICE VALVES SHALL UTILIZE VITON GASKETS.
  10. PROVIDE FOUR (4) 10" DIP BEND FITTINGS AND SIX (6) 4" DIP BENDS AS SPARES. INSTALL AS NEEDED.
  11. REPAINT ALL PIPING NEW & EXISTING AS SHOWN IN SCHEMATIC.
  12. ALL SUPPORTS, BOLTED SADDLES, ALLTHREAD AND SUPPORTS SHALL BE HDG G90, ASTM A153, ASTM A123.
  13. ALL NEW PIPING SHALL BE FLANGE BY FLANGE DIP. REQUIRED FLANGE BY FLANGE SPOOL PIPE SECTIONS ARE NOT SHOWN ON THE SCHEMATIC FOR CLARITY. PROVIDE WELDED STEEL PIPE FLANGES WHERE REQUIRED FOR CONNECTIONS.

2 41 NTS SSWWTP WAS BASIN PIPING SCHEMATIC 2

PIPING AND APPURTENANCES SCHEDULE 2	
ID	KEYED NOTE DESCRIPTION
1	BLOWER PACKAGE SYSTEM
2	10" DIP TEE (FLG X FLG)
3	10" BLIND FLANGE
4	10" DIP 90° BEND FITTING
5	10" BUTTERFLY VALVE (FLANGED)
6	10" SCH-40 STEEL 90° (FLANGED)
7	10" SADDLE PIPE SUPPORT (ROOF). SEE DETAIL 5/40 FOR ADDITIONAL INFORMATION ON REQUIRED LOCATIONS.
8	4" RIGHT ANGLE VALVE (FLANGED FOR HIGH TEMPERATURE AIR SERVICE)
9	10" SCH-40 STEEL TEE (FLANGED)
10	10" SOLID SLEEVE W/316 SSTL BOLT SET (DRESSER)
11	10" PIPE BOLTED SADDLE SUPPORT BASE (HDG)
12	10" PIPE BOLTED SADDLE SUPPORT W/ALLTHREAD (HDG) ABOVE ODOR CONTROL SUPPORTS (A/43)
13	10" X 10" X 4" SCH-40 STEEL TEE (FLANGED)
14	SPECIAL PIPE SUPPORT FRAME AND FOOTING
15	4" BUTTERFLY VALVE (FLANGED FOR HIGH TEMPERATURE AIR SERVICE)
16	4" SCH-40 STEEL 90° BEND (FLANGED)
17	4" SCH-40 STEEL 316 SSTL FLG X FLG SPOOL - CONNECTION IS ±4'-0" BELOW FRP COVER W/ NEW GASKET AND 316 SST BOLT SET. SEE NOTE #6.
18	10" PIPE BOLTED SADDLE SUPPORT WITH BASE SUPPORT AT SIDEWALK & FOUR 1/2" ANCHOR BOLT BASE PLATES
19	SCH-40 STEEL TEE (FLANGED)
20	10" RESTRAINED EXPANSION JOINT(S) - RESTRAINT ROD SETS SHALL BE HDG



1 41 NTS SSWWTP MAIN LIFT STATION BLOWER ROOM PIPING SCHEMATIC

REVISION	BY	DATE
ADDENDUM #2	TJR	3/24/25

BAR IS ONE INCH ON ORIGINAL DRAWING 0 IF NOT ONE INCH ON THIS SHEET, ADJUST SCALES ACCORDINGLY

DRAWING 203.640.D  
SSWWTP WAS BASIN WAS  
BLOWER PIPING SCHEMATIC  
WATER POLLUTION CONTROL  
CAPITAL EQUIPMENT REPLACEMENTS  
TMUA PROJECT WPC 25-1  
CITY OF TULSA, OKLAHOMA  
TULSA METROPOLITAN UTILITY AUTHORITY  
WATER AND SEWER DEPARTMENT

PLANS AND ESTIMATES PREPARED BY: HOLLOWAY, UPDKE + BELLEN, Inc.  
200 N. WILLOW AVE., SUITE 200, TULSA, OKLAHOMA 74103  
918-259-0707, FAX 918-259-0754

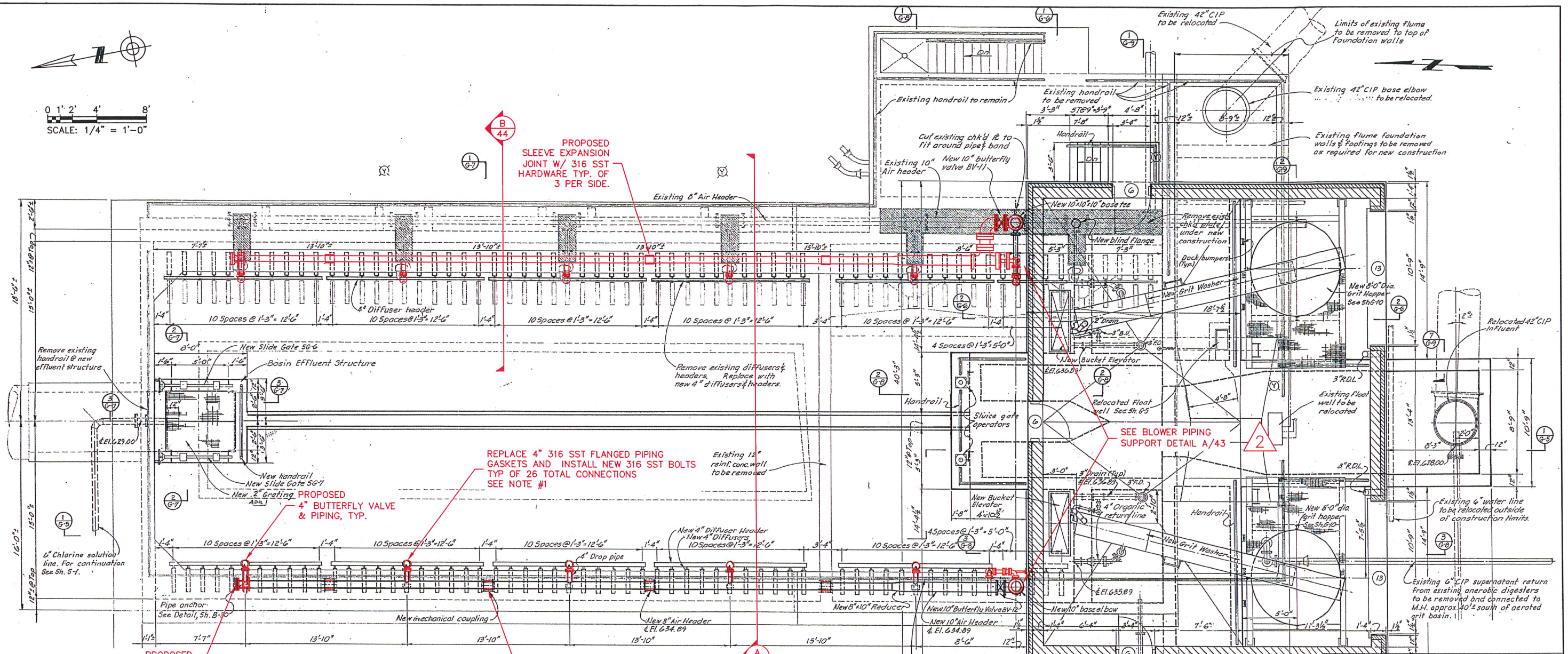
PLAN SCALE:	DRAWN	CMW	APPROVED:
	DESIGNED	TJR	
	SURVEY		
PROFILE SCALE:	PROJ. MGR.	TJR	
HORIZONTAL:	LEAD ENGR.	LST	
	FIELD MGR.		
VERTICAL:			DESIGN ENGINEERING MANAGER

FILE: DRAWING: DATE: 2025  
ATLAS PAGE NO: --- SHEET 41 OF 48 SHEETS

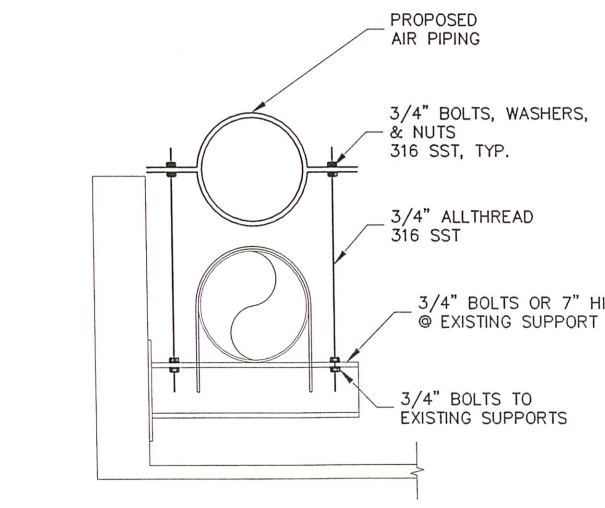




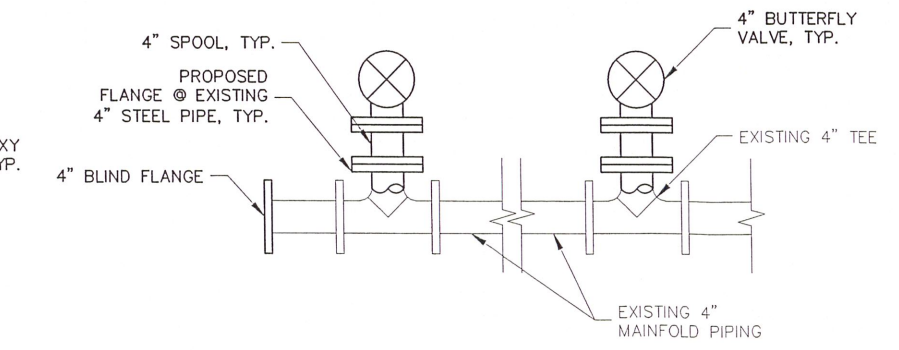
0 1' 2' 4' 8'  
SCALE: 1/4" = 1'-0"



1  
43 SSWWTP UNTHICKENED WAS STORAGE & BASIN PLAN  
SCALE: 1/4" = 1'-0"



A  
43 WAS BLOWER PIPE SUPPORT  
NTS



B  
43 WAS BLOWER PIPE SUPPORT  
NTS

- NOTES:
- 1. REMOVE AND REPLACE ALL DIFFUSER BASIN 4" PIPING INTERNAL GASKETS AND 316 SST BOLTS AT 4" FLANGE LOCATIONS. THE LOCATIONS ARE WITHIN THE BASIN AND AT 30 EA LOCATIONS.
  - 2. ALL PIPE SUPPORTS SHALL BE HDG UNLESS SPECIFICALLY NOTED OTHERWISE.



REVISION	BY	DATE
ADDENDUM #2	TJR	3/24/25

BAR IS ONE INCH ON ORIGINAL DRAWING 1" IF NOT ONE INCH ON THIS SHEET, ADJUST SCALES ACCORDINGLY

REFERENCE ORIGINAL CONTRACT SA 69-2 RECORD DRAWINGS FOR ADDITIONAL DETAILS & INFORMATION

DRAWING 203.640.F  
SSWWTP GRIT BASIN WAS PIPING PLAN

WATER POLLUTION CONTROL  
CAPITAL EQUIPMENT REPLACEMENTS  
TMUA PROJECT WPC 25-1  
CITY OF TULSA, OKLAHOMA  
TULSA METROPOLITAN UTILITY AUTHORITY  
WATER AND SEWER DEPARTMENT

PLANS AND ESTIMATES PREPARED BY: HOLLOWAY, UPDIKE + BELLEN, INC.  
3001 N WILLOW AVE, BROKEN ARROW, OKLAHOMA 74012  
(918) 259-0772 FAX (918) 259-0774

PLAN SCALE:	DRAWN	CMW	APPROVED:
	DESIGNED	TJR	
	SURVEY		
PROFILE SCALE:	PROJ. MGR.	TJR	
	LEAD ENGR.	LST	
	FIELD MGR.		
HORIZONTAL:			
VERTICAL:			
FILE:	DRAWING:	DATE:	2025
ATLAS PAGE NO: ---			SHEET 43 OF 48 SHEETS

Z:\Projects\2024\24TMUAWPC25-1\Design\Production\Plans\Floor Plan.dwg, 3/24/2025 9:24:21 AM

