

TULSA METROPOLITAN UTILITY AUTHORITY

175 E. 2nd Street

TULSA, OKLAHOMA 74103

February 25, 2025

**ADDENDUM NO. 2
TO
HAIKEY CREEK OPERATION AND MAINTENANCE
CAPITAL EQUIPMENT REPLACEMENTS
RMUA PROJECT NO. WPC 25-2
BAMA PROJECT NO. 2354170**

This Addendum No. 2, consisting of six (6) items is hereby made a part of the Contract Documents to the same extent as though it were originally included therein, and shall supersede anything contained in the Plans and Specifications with which it might conflict. **All addenda to the contract documents should be denoted on the last page of the Proposal in the space provided.**

All other provisions of the Plans and Specifications shall remain in full force and effect.

CITY OF TULSA WATER AND SEWER DEPARTMENT

Cindy Cantero
Water Pollution Control Section Manager



ENGINEERS

**ADDENDUM NO. 2
FEBRUARY 25, 2025**

**HAIKEY CREEK OPERATION & MAINTENANCE
CAPITAL EQUIPMENT REPLACEMENTS
RMUA PROJECT NO. WPC 25-2
BAMA PROJECT NO. 2354170**

This Addendum No. 2, consisting of six (6) items is hereby made a part of the Contract Documents to the same extent as though it were originally included therein, and shall supersede anything contained in the Plans and Specifications with which it might conflict. **All addenda to the contract documents should be denoted on the last page of the Proposal in the space provided.**

CONTRACT DOCUMENTS:

1. BID PROPOSAL:

Delete the existing Proposal in its entirety and replace with the attached revised Proposal for Project RMUA WPC 25-2. For clarification, the new proposal has been changed to update the unit and quantities.

The revised electronic proposal is found at:

<https://www.cityoftulsa.org/government/departments/engineering-services/construction-bids/>

It is the Bidders responsibility to download the revised Proposal onto their thumb drive.

CONSTRUCTION DRAWINGS:

2. REFER TO DRAWINGS 203.100.A, 203.100.B, AND 203.100.C:


- a. Replace all references to grit basin deflector quantities on each sheet. For clarification, there are a total of 18 deflectors per basin (two basins for a total of 36 deflectors). There are 14 deflectors in the front row of each basin and 4 behind the

front row in the end of the channel. The record drawing used as a base drawing in various locations is not correct.

3. REFER TO DRAWING 203.100.E (SHEET 8), DETAIL 2/8 – GRIT COLLECTOR #1 & #2 DEFLECTOR DETAILS:
 - b. Replace call out note “REPAIR CONCRETE COATING AS REQUIRED” with “REPAIR CONCRETE FILLET WITH NONSHRINK GROUT AND REPAIR CORROSION RESISTANT CONCRETE COATING AS REQUIRED, UP TO APPROXIMATELY 4 SQUARE FEET AT EACH DEFLECTOR BASE LOCATION”.
4. DELETE DRAWING 203.200.A (SHEET 9) – OPERATIONS LABORATORY & OPERATIONS ROOM REMODEL PLAN AND REPLACE IT WITH THE ATTACHED DRAWING MARKED ADDENDUM NO. 2.
5. REFER TO DRAWING 203.500.A (SHEET 17) – HAIKEY CREEK LIFT STATION BAR SCREEN CONVEYOR TROUGH LINER REPLACEMENT:
 - a. ON DETAIL 3/17 REVISE THE CALL OUT FOR STAINLESS STEEL ANGLE SIZE FROM 3/4” X 3/16” TO 3/4” X 3/4” X 3/16”.
6. REFER TO DRAWING 203.500.B (SHEET 18) – HAIKEY CREEK LIFT STATION BAR SCREEN CONVEYOR TROUGH LINER REPLACEMENT:
 - a. Add the following sentence to the end of Note #3:

“The anticipated screenings quantity is roughly 3.5 CY (loose) or less per day.”

HOLLOWAY, UPDIKE AND BELLEN, INC.



Stephen Tolar, P.E., S.E.
President



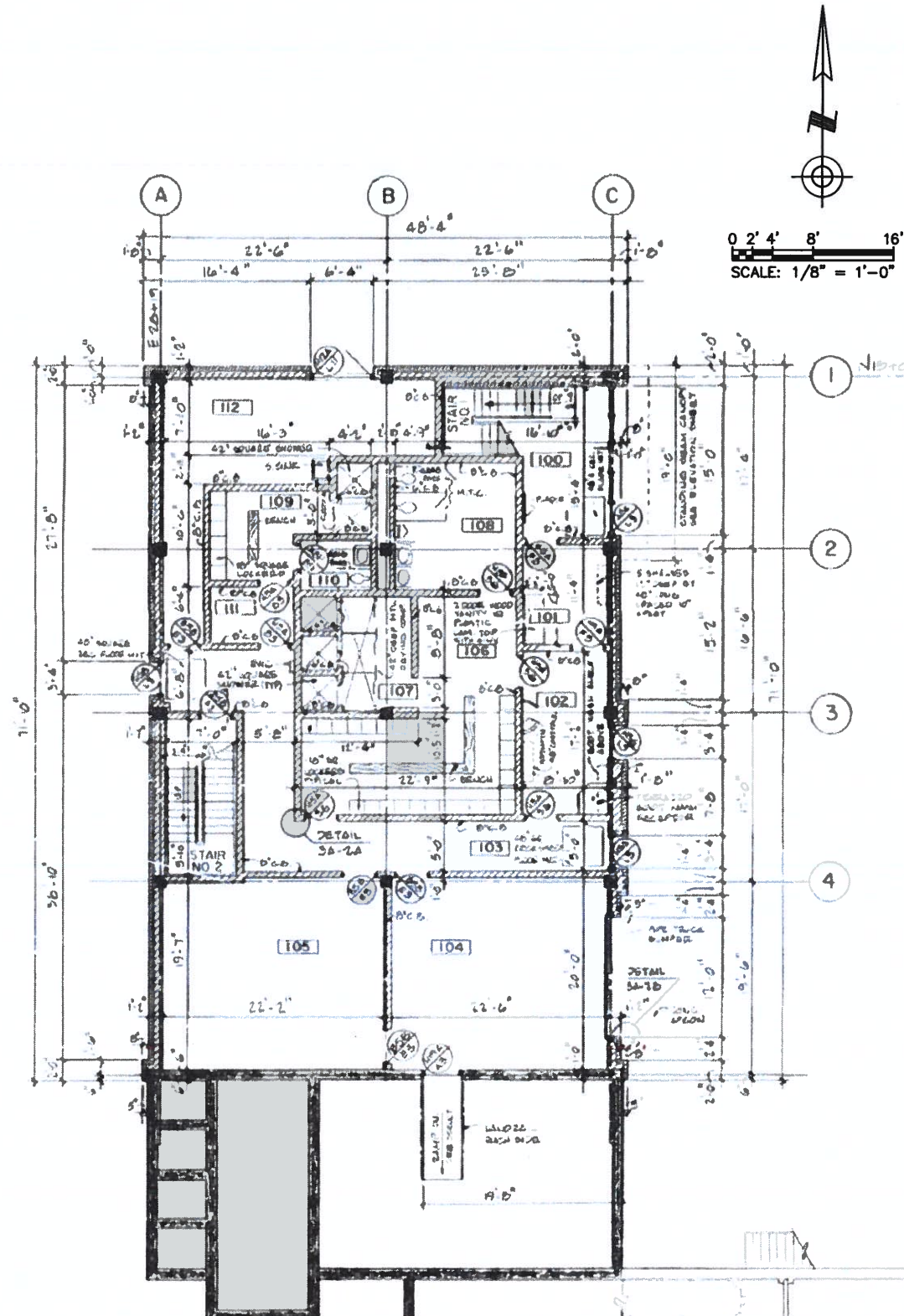
END ADDENDUM NO. 2

ROOM FINISH SCHEDULE Δ

MARK	ROOM	FLOORING:	WALLS:	CEILING:	NOTES
A	PROPOSED OFFICE	REFURBISH	PAINTED, SEE NOTES	SUSPENDED ACOUSTIC	1, 2, 3, 4, 5, 8
B	CLOSET	REFURBISH	PAINTED, SEE NOTES	CONCRETE DECK	1
C	LABORATORY	REFURBISH	PAINTED, SEE NOTES	SUSPENDED ACOUSTIC	1, 2, 3, 4, 5, 6, 8
D	OPERATIONS ROOM	REFURBISH	PAINTED, SEE NOTES	SUSPENDED ACOUSTIC	1, 3, 4, 5, 8, 9
E	HALLWAY				7

FINISH NOTES:

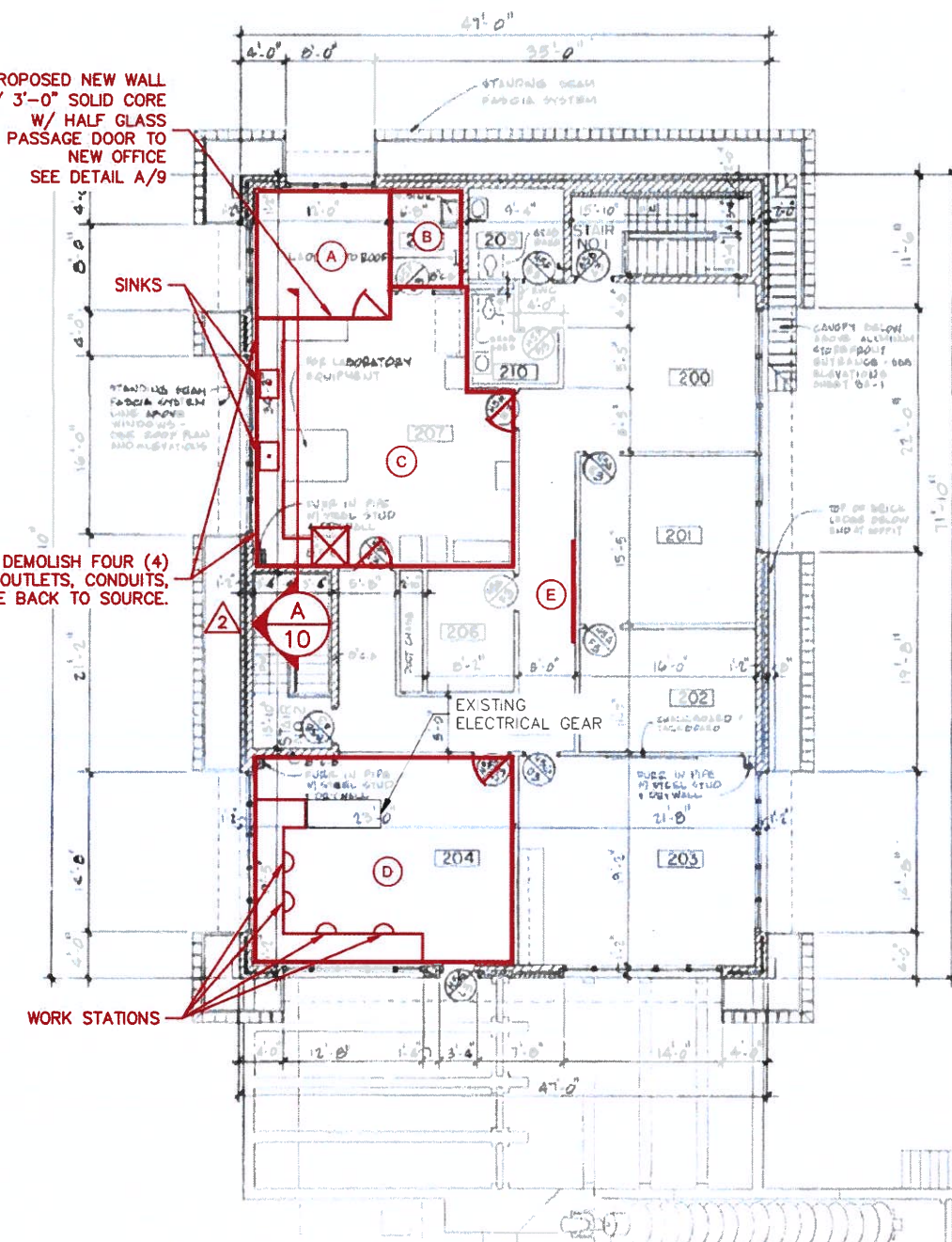
- PAINT SHALL BE OIL BASED SATIN FINISH. COLOR SELECTED BY OWNER.
- DEMOLISH ALL WALL TILE AND SUBSTRAIGHT. PREPARE WALL AND INSTALL MOISTURE RESISTANT 5/8" SHEETROCK AND PAINT.
- REMOVE AND REPLACE BLINDS W/VERTICAL 4" WIDE COMMERCIAL BLIND SYSTEM, BLIND SHOULD BE UV STABLE, ROTATE AND SLIDE TO ONE SIDE IN EACH WINDOW OPENING. CUSTOM FIT FOR SPACE AND LOCATION. COLOR BY OWNER.
- REFURBISH EXISTING TERRAZZO FLOOR SYSTEM. CONTRACTOR TO INCLUDE MANUFACTURING REPRESENTATIVE SPECIAL SERVICES FOR INSPECTION, RECOMMENDATION, SURFACE GRINDING/POLISHING, SURFACE CLEANING AND SEALING. REPAIR FLOOR PER MANUFACTURER'S REQUIREMENTS AT DEMOLISHED CABINETS AND OTHER AREAS AS REQUIRED.
- REPLACE CEILING GRID SYSTEM AND TILE. SEE SHEET 13.
- REMOVE, PROTECT, AND REINSTALL FOUR (4) BOTTLE RACKS WITH NEW 316 SST SCREWS & PROVIDE 200 ADDITIONAL NEW BOTTLE PEGS. CONTRACTOR SHALL COORDINATE & FIELD VERIFY. COORDINATE LOCATIONS WITH OWNERS REPRESENTATIVE. PROVIDE FOUR (4) 4'X4' BLACKLAND MANUFACTURING 1" RESIN PEGBOARD DRYING RACK COMPLETE W/ PEGS AND 20 EA SPARE PEGS PER BOARD. BOARD SHALL BE BLACK WITH WHITE PEGS.
- PROVIDE AND INSTALL SHOWCASE ART AND FRAMING (SHOWCASEARTANDFRAMING.COM) CLEAR ACRYLIC WALL DISPLAY - LANDSCAPE 11x8.5 (3x4) (SKU: CWA34L)
- REPLACE WINDOW SILLS AND TRIM MATCHING CABINET BACKSPLASH AND TOP MATERIALS.



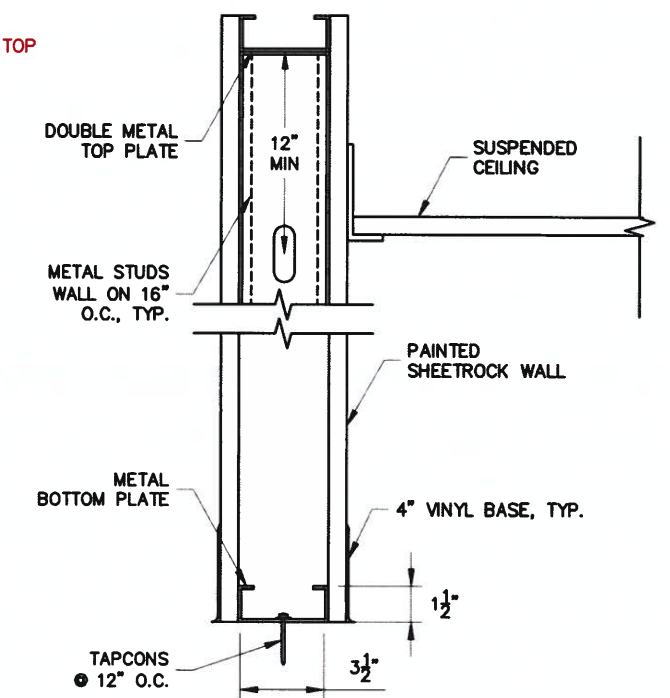
1 PLAN @ OPERATIONS BUILDING (FIRST FLOOR)
9 SCALE: 1/8" = 1'-0"

PROPOSED NEW WALL
W/ 3'-0" SOLID CORE
W/ HALF GLASS
PASSAGE DOOR TO
NEW OFFICE
SEE DETAIL A/9

DEMOLISH FOUR (4)
240V OUTLETS, CONDUITS,
& WIRE BACK TO SOURCE.



2 PLAN @ OPERATIONS BUILDING (SECOND FLOOR)
9 SCALE: 1/8" = 1'-0"



A TYPICAL SHEETROCK METAL STUD WALL
9 NTS

REVISION	BY	DATE
Δ ADDENDUM #2	TJR	2/25/25

BAR IS ONE INCH ON ORIGINAL DRAWING IF NOT ONE INCH ON THIS SHEET, ADJUST SCALES ACCORDINGLY

REFERENCE ORIGINAL SA 83-1 RECORD DRAWINGS FOR ADDITIONAL DETAILS & INFORMATION

203.200.A OPERATIONS LABORATORY & OPERATIONS ROOM REMODEL PLAN

WATER POLLUTION CONTROL CAPITAL EQUIPMENT REPLACEMENTS RMUA PROJECT WPC 25-2

CITY OF TULSA, OKLAHOMA
TULSA METROPOLITAN UTILITY AUTHORITY
WATER AND SEWER DEPARTMENT

PLANS AND ESTIMATES PREPARED BY: **HOLLOWAY, UPDKE + BELLEN, Inc.**
3008 N. WILLOW AVE., BROOKER AVENUE, OKLAHOMA 74102
918-251-0750, FAX 918-251-0754

PLAN SCALE:	DRAWN	CMW	APPROVED:
	DESIGNED	TJR	
	SURVEY		
PROFILE SCALE:	PROJ. MGR.		
	LEAD ENGR.		
HORIZONTAL:	FIELD MGR.	TJR	
VERTICAL:			

DESIGN ENGINEERING MANAGER

FILE: DRAWING: DATE: 2025
ATLAS PAGE NO: --- SHEET 9 OF 19 SHEETS

